

GAGGIONE



STANDARD RANGE

32 mm PMMA&PC collimator -
LLC25

Last update : October, 2024

GAGGIONE is launching a new 32 mm color mixing collimators. In order to improve the mechanical integration of this range, we developed a **new version without sprue**, except for the **LLC25E which has a Poka Yoke system**.

LLC25: presentation

Visit our [website](#)

9 references



LLC25N

Narrow version



LLC25C

Color version



LLC25G

Wall grazing version



LLC25M

Medium version



LLC25W

Wide version



LLC25V

Very large version



LLC25E

Elliptical version



LLC25A

Asymmetric version



LLC25AF

Asymmetric version
(frosted input port)

This range is in PMMA. PC versions are also available, feel free to contact [our sales team](#) for more information.

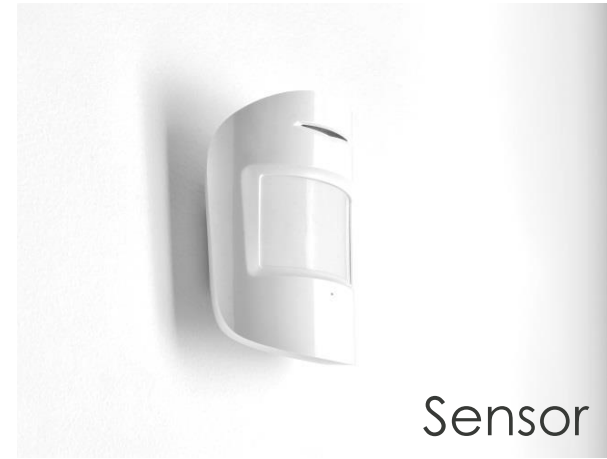
LLC25: LED specifications

LES size: high power: max 16mm² - COB: Ø 6mm max

Type of LED: high power, mid power, chip scale package, COB, CSP Cluster and high power cluster

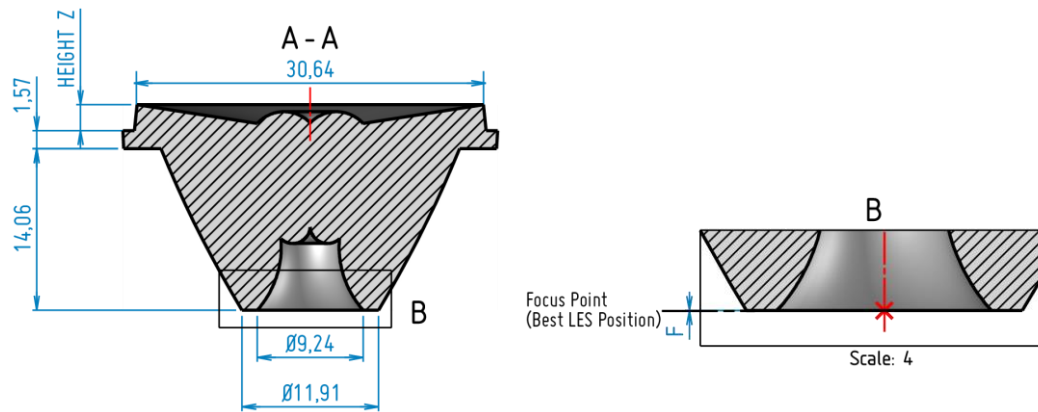
Type of Led	LLC25N	LLC25C	LLC25G	LLC25M	LLC25W	LLC25V	LLC25E	LLC25A/AF
RGBW	✓	✓	✓	✓	✓	✓	✓	
Tunable White	✓	✓	✓	✓	✓	✓	✓	
Single chip	✓	✓	✓	✓	✓	✓	✓	✓
Multi chip	✓	✓	✓	✓	✓	✓	✓	✓
COB	✓	✓	✓	✓	✓	✓	✓	✓

LLC25: applications

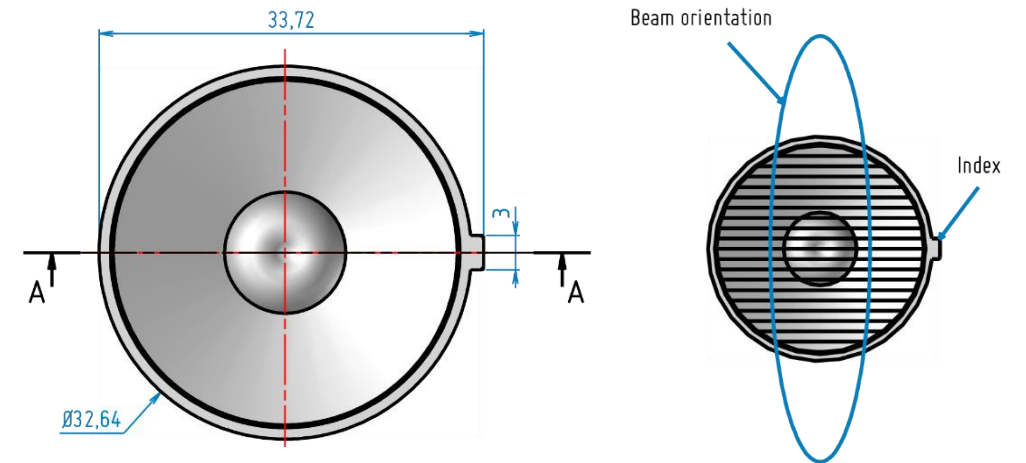
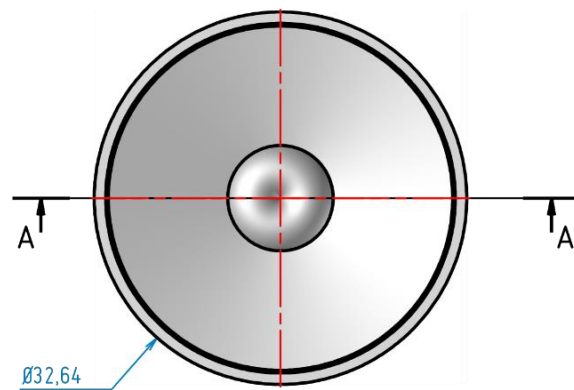
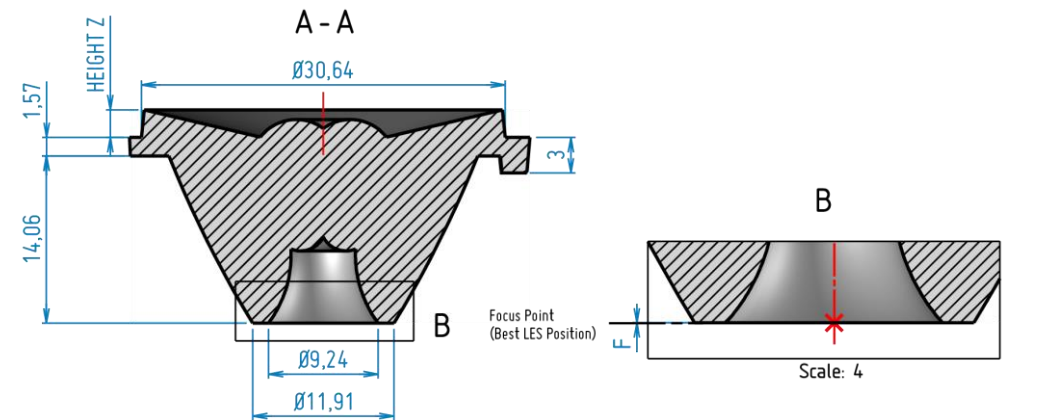


LLC25: 2D drawing

LLC25x



LLC25E



Without holder, all dimensions are in millimeters.

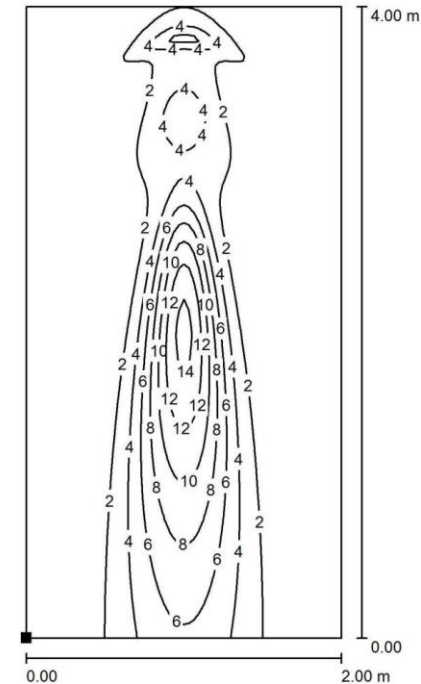
General tolerance +/- 0.1mm (standard NFT 58-000 cat. 4, reduced class).

LLC25N: Narrow beam



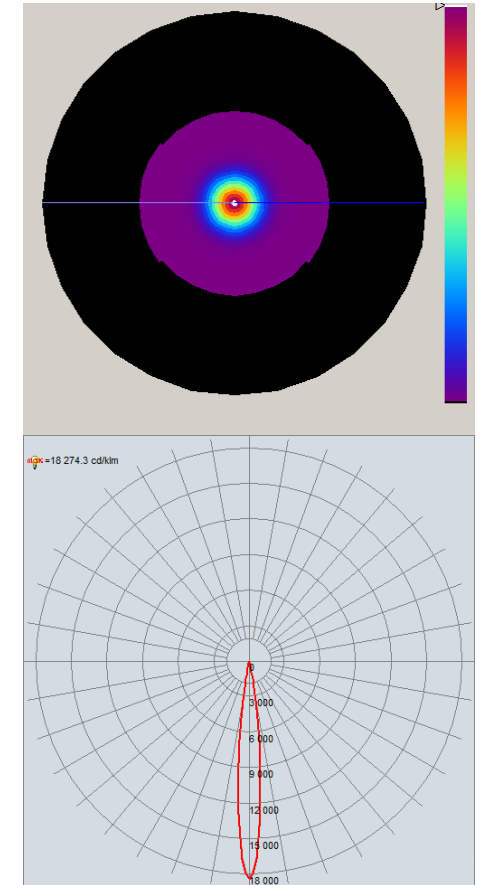
Compatibility matrix

	OSRAM	LUMILEDS	NICHIA	CREE
LLC25N	Ostar Stage RGBW	Luxeon Z RGBW	NCSWE17AT	XHP35.2 HI
FWHM (°)	11.5	12.9	7.9	11.3
FWTM (°)	20.8	22.7	15.9	22.3
Efficacy (cd/lm)	18.3	15.5	33.6	16.5
CCI*	6.0	16.5	-	-
		CITIZEN	LUMINUS	BRIDGELUX
		CLU7B2	CXM_4	VESTA 6 TW
FWHM (°)		12.3	14.5	17.8
FWTM (°)		24.7	29.0	37.0
Efficacy (cd/lm)		13.8	9.6	5.7



Dialux simulation

Values in lux, scale 1 : 32
Distance from wall: 0,3 m



Intensity pattern

LED: OSTAR_STAGE_LE_RTDUW_S2WN

Visit the [product page](#) on our website

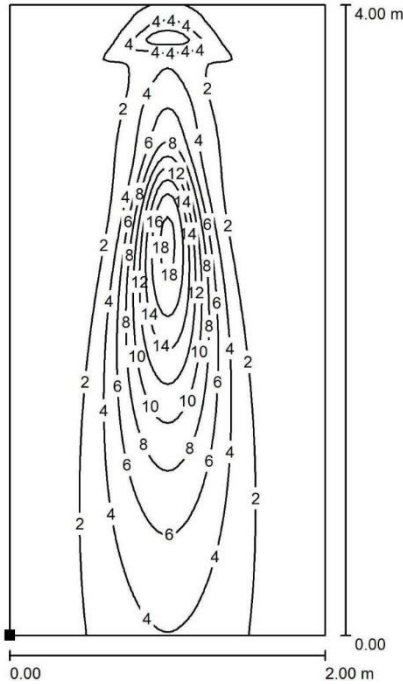
*CCI: Color Consistency Index, [more information](#)

LLC25C: Color beam



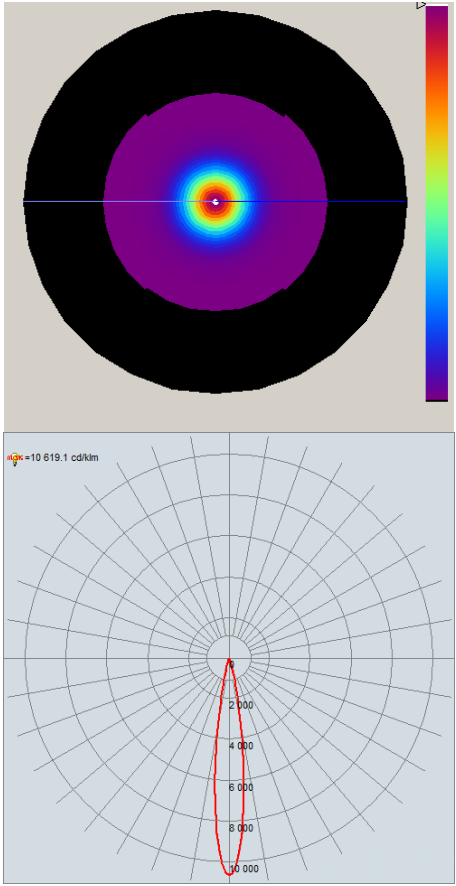
Compatibility matrix

	OSRAM	LUMILEDS	NICHIA	CREE
LLC25C	Ostar Stage RGBW	Luxeon Z RGBW	NCSWE17AT	XHP35.2 HI
FWHM (°)	14.9	16.8	11.3	15.1
FWTM (°)	27.9	31.4	23.1	29.6
Efficacy (cd/lm)	10.6	8.1	16.6	9.1
CCI*	4.0	10.7	-	-
		CITIZEN	LUMINUS	BRIDGELUX
		CLU7B2	CXM_4	VESTA 6 TW
FWHM (°)		15.7	17.5	20.7
FWTM (°)		30.8	34.4	41.4
Efficacy (cd/lm)		8.7	6.8	4.8



Dialux simulation

Values in lux, scale 1 : 32
Distance from wall: 0,3 m



Intensity pattern

LED: OSTAR_STAGE_LE_RTDUW_S2WN

Visit the [product page](#) on our website

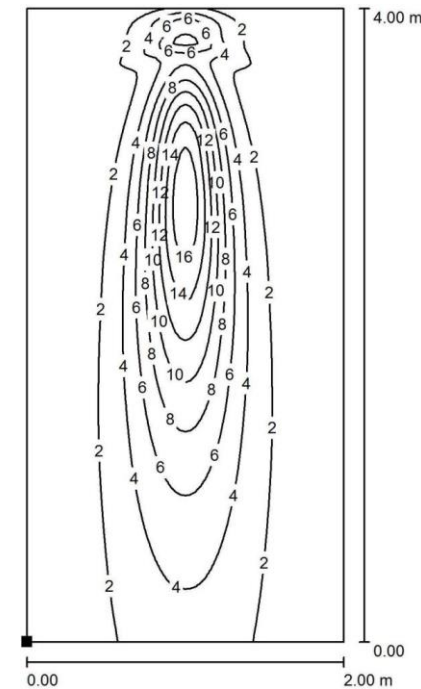
*CCI: Color Consistency Index, [more information](#)

LLC25G: Wall grazing beam



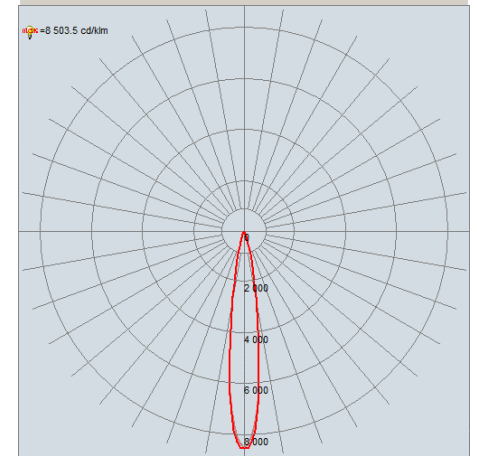
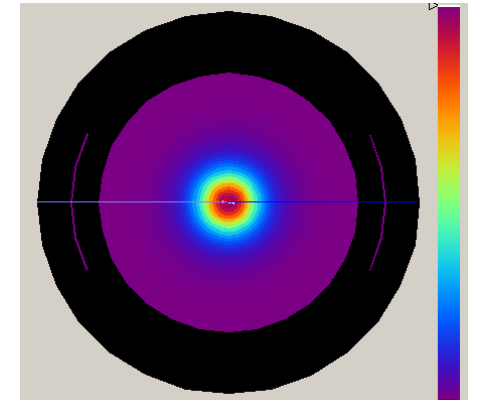
Compatibility matrix

	OSRAM	LUMILEDS	NICHIA	CREE
LLC25G	Ostar Stage RGBW	Luxeon Z RGBW	NCSWE17AT	XHP35.2 HI
FWHM (°)	15.0	16.3	12.4	15.6
FWTM (°)	30.6	32.7	28.4	32.9
Efficacy (cd/lm)	8.5	7.1	10.4	7.3
CCI*	3.4	3.9	-	-
		CITIZEN	LUMINUS	BRIDGELUX
		CLU7B2	CXM_4	VESTA 6 TW
FWHM (°)		16.7	18.8	23.6
FWTM (°)		34.4	37.7	45.9
Efficacy (cd/lm)		6.7	5.4	3.7



Dialux simulation

Values in lux, scale 1 : 32
Distance from wall: 0,3 m



Intensity pattern

LED: OSTAR_STAGE_LE_RTDUW_S2WN

Visit the [product page](#) on our website

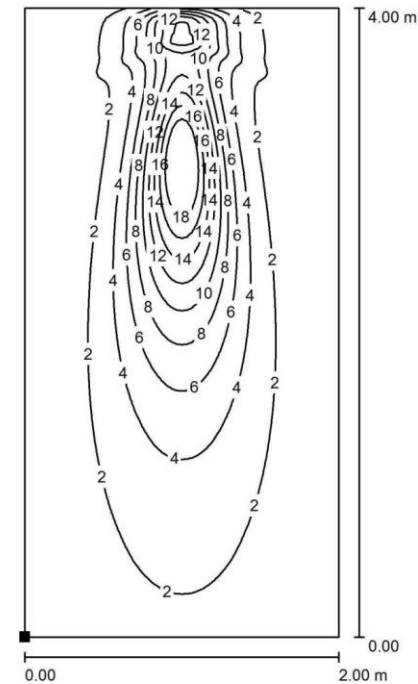
*CCI: Color Consistency Index, [more information](#)

LLC25M: Medium beam



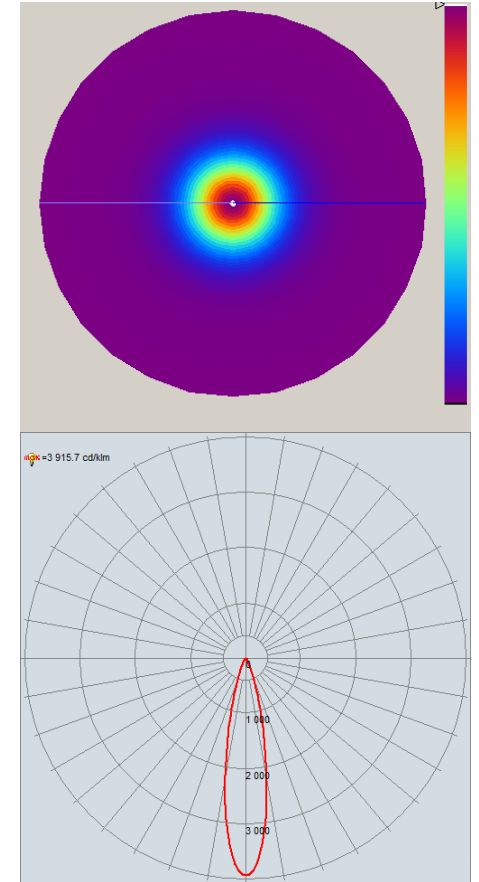
Compatibility matrix

	OSRAM	LUMILEDS	NICHIA	CREE
LLC25M	Ostar Stage RGBW	Luxeon Z RGBW	NCSWE17AT	XHP35.2 HI
FWHM (°)	21.5	20.8	19.7	21.2
FWTM (°)	42.1	41.6	38.5	42.2
Efficacy (cd/lm)	3.9	4.0	4.8	4.0
CCI*	2.9	6.3	-	-
		CITIZEN	LUMINUS	BRIDGELUX
		CLU7B2	CXM_4	VESTA 6 TW
FWHM (°)		21.0	22.2	25.9
FWTM (°)		42.2	44.4	52.5
Efficacy (cd/lm)		3.9	3.4	2.6



Dialux simulation

Values in lux, scale 1 : 32
Distance from wall: 0,3 m



Intensity pattern

LED: OSTAR_STAGE_LE_RTDUW_S2WN

Visit the [product page](#) on our website

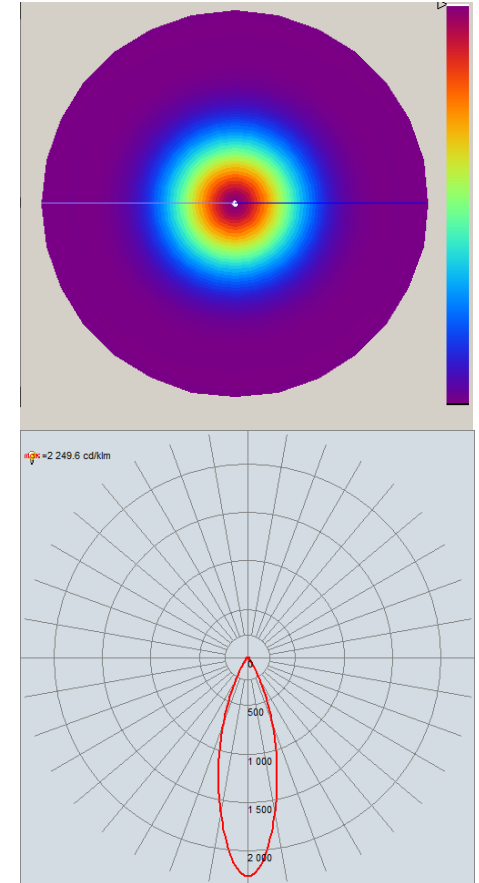
*CCI: Color Consistency Index, [more information](#)

LLC25W: Wide beam



Compatibility matrix

	OSRAM	LUMILEDS	NICHIA	CREE
LLC25W	Ostar Stage RGBW	Luxeon Z RGBW	NCSWE17AT	XHP35.2 HI
FWHM (°)	30.7	32.3	31.5	31.6
FWTM (°)	58.5	60.3	57.9	60.0
Efficacy (cd/lm)	2.2	1.8	2.3	2.1
CCI*	3.2	6.3	-	-
		CITIZEN	LUMINUS	BRIDGELUX
		CLU7B2	CXM_4	VESTA 6 TW
FWHM (°)		33.6	32.2	33.4
FWTM (°)		62.1	61.1	67.5
Efficacy (cd/lm)		1.9	1.9	1.7



Intensity pattern

LED: OSTAR_STAGE_LE_RTDUW_S2WN

Visit the [product page](#) on our website

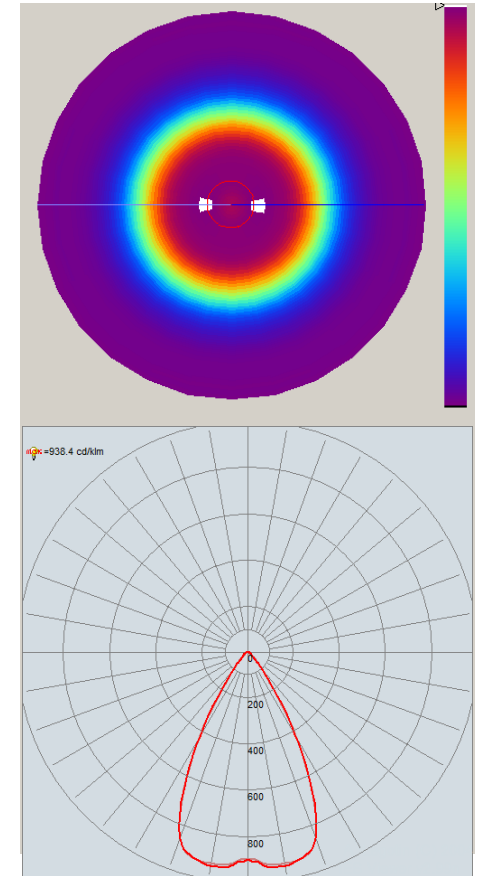
*CCI: Color Consistency Index, [more information](#)

LLC25V: Very large beam



Compatibility matrix

	OSRAM	LUMILEDS	NICHIA	CREE
LLC25V	Ostar Stage RGBW	Luxeon Z RGBW	NCSWE17AT	XHP35.2 HI
FWHM (°)	57.5	55.0	55.2	56.9
FWTM (°)	79.6	78.0	78.0	81.7
Efficacy (cd/lm)	0.9	1.0	1.0	1.0
CCI*	6.8	7.0	-	-
		CITIZEN	LUMINUS	BRIDGELUX
		CLU7B2	CXM_4	VESTA 6 TW
FWHM (°)		52.8	52.5	53.3
FWTM (°)		76.2	76.8	82.3
Efficacy (cd/lm)		1.1	1.0	1.0



Intensity pattern

LED: OSTAR_STAGE_LE_RTDUW_S2WN

Visit the [product page](#) on our website

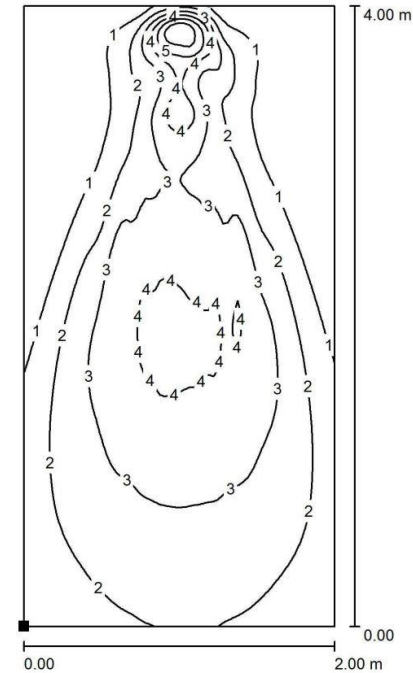
*CCI: Color Consistency Index, [more information](#)

LLC25E: Elliptical beam



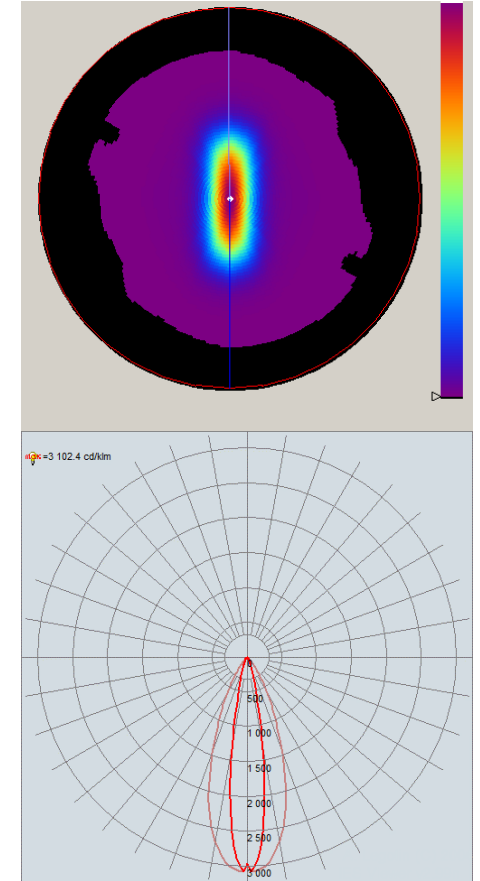
Compatibility matrix

	OSRAM	LUMILEDS	NICHIA	CREE
LLC25E	Ostar Stage RGBW	Luxeon Z RGBW	NCSWE17AT	XHP35.2 HI
FWHM (°)	11.1 – 33.9	12.9 – 33.2	8.5 – 34.4	12.8 – 33.9
FWTM (°)	20.0 – 51.2	22.5 – 53.2	15.9 – 48.4	23.5 – 52.8
Efficacy (cd/lm)	6.6	5.5	8.4	5.6
CCI*	4.4	9.3		
		CITIZEN	LUMINUS	BRIDGELUX
		CLU7B2	CXM_4	VESTA 6 TW
FWHM (°)		12.5 – 33.9	15.3 – 32.0	19.3 – 32.9
FWTM (°)		23.9 – 54.0	29.6 – 54.5	32.9 – 60.1
Efficacy (cd/lm)		5.4	4.4	3.1



Dialux simulation

Values in lux, scale 1 : 32
Distance from wall: 0,3 m



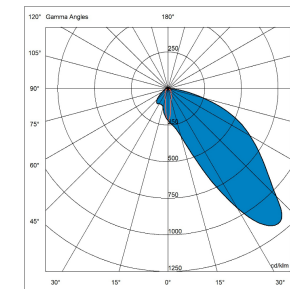
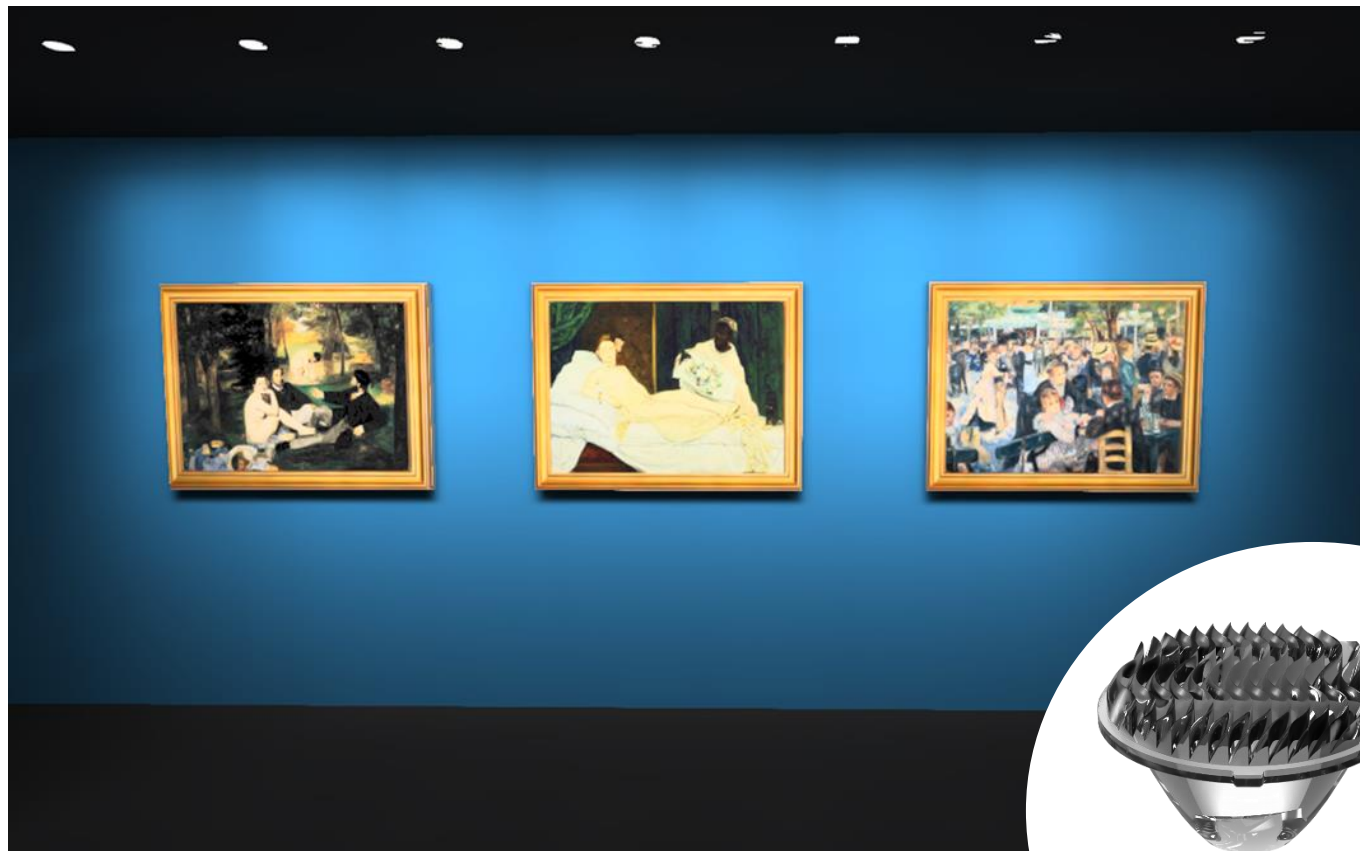
Intensity pattern

LED: OSTAR_STAGE_LE_RTDUW_S2WN

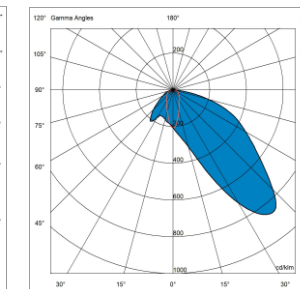
Visit the [product page](#) on our website

*CCI: Color Consistency Index, [more information](#)

LLC25A/AF: Asymmetric beam



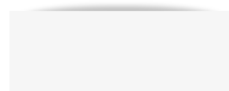
LLC25A



LLC25AF



LLC25A provides an **excellent light distribution** on the wall, **starting right from the beginning** of the wall.
LLC25AF has frosted input port and provides slightly better uniformity near the ceiling level
See [full application example from here](#)



Rectangular beam



Flush-mounted integration



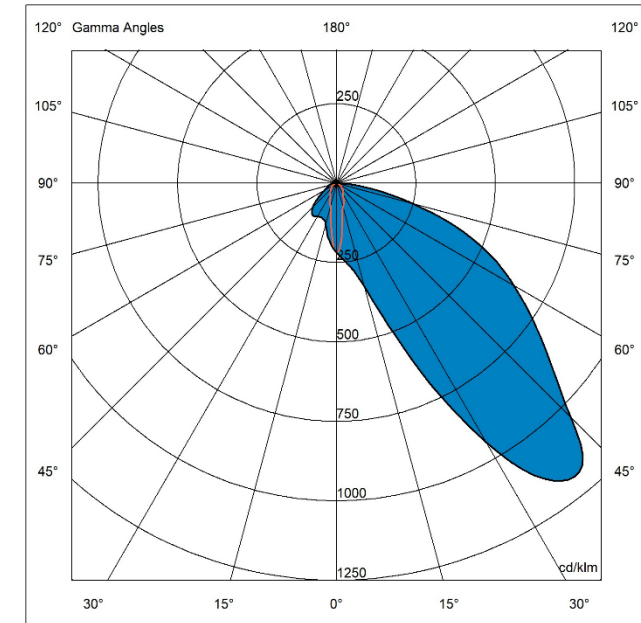
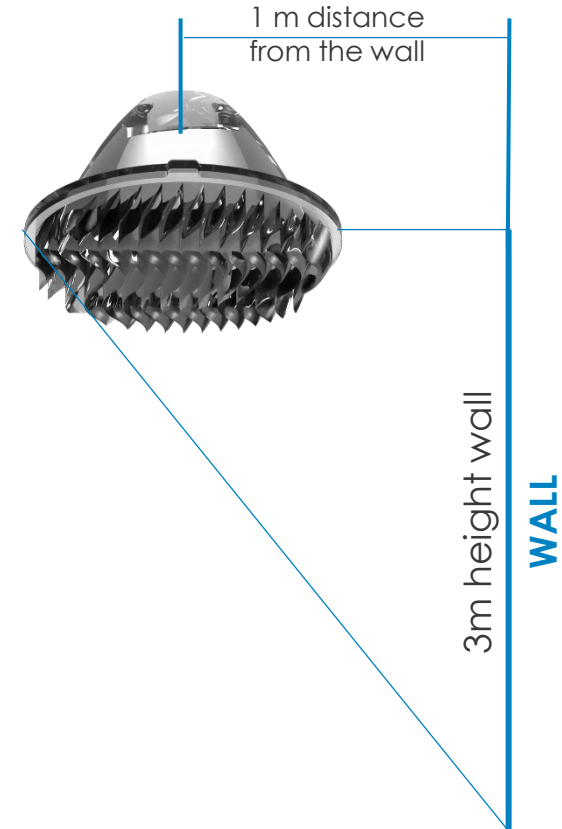
Patented technology

LLC25A/AF – Illumination pattern

How to implement LLC25A

- Distance ratio from the wall : 1:3 of the height of the wall is recommended
- Spacing: the spacing of the luminaires should be up to 60cm between the luminaires

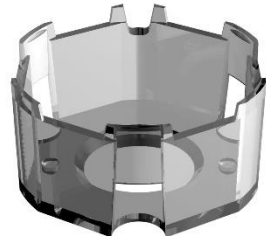
Download [application note from here](#)



LLC25A
LED : XHP35B HI

LLC25: compatible holders

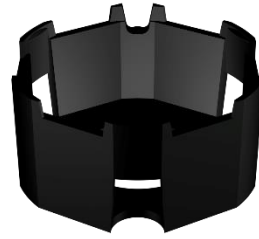
LLH02XALO*



Clear holder

Without adhesive: LLH02XAL00

Without adhesive:



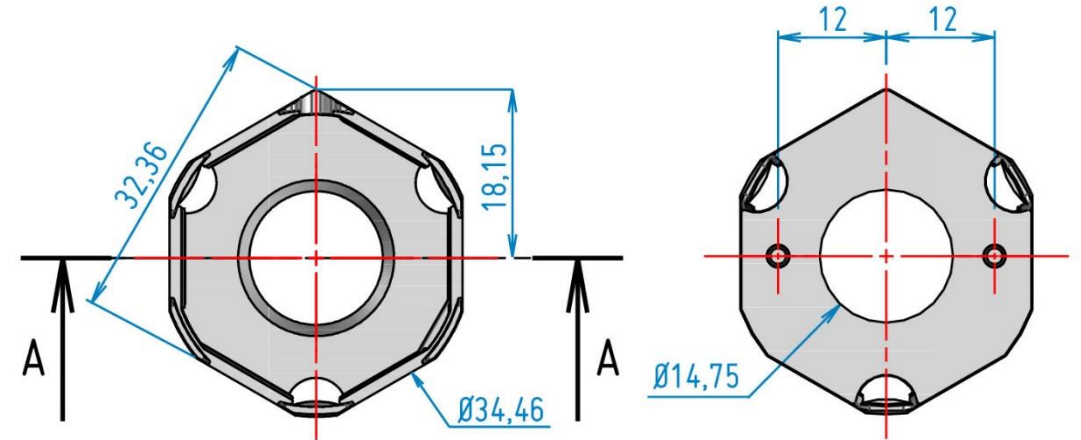
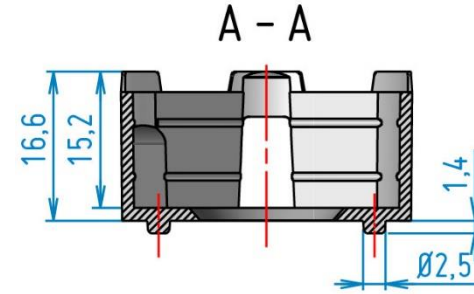
Black holder

Without adhesive: LLH02XAL02

With adhesive:

With adhesive: LLH02XAL001

With adhesive: LLH02XAL021



Reference	Diameter (mm)	Nominal distance from PCB (mm)	Note
LLH02XALO*	32	0.25	With pins

* : colors 0 (clear), 2 (black)

If you need another color of holder, please [contact us](#)

All dimensions are in millimeters.

General tolerance +/- 0.1mm (standard NF T 58-000 cat. 4, reduced class).



Positioning holes need to be created into the PCB.

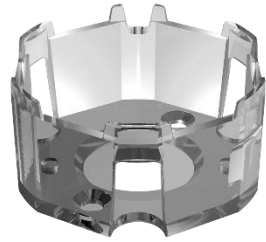
LLC25: Assembled set

LLH02XAL0* + LLC25x

Holder	Color	Adhesive	Narrow LLC25N	Color LLC25C	Wall grazing LLC25G	Medium LLC25M	Wide LLC25W	Very large LLC25V	Elliptical LLC25E
LLH02XAL00	Clear	✗	LLS25N02XAL00	LLS25C02XAL00	LLS25G02XAL00	LLS25M02XAL00	LLS25W02XAL00	LLS25V02XAL00	LLS25E02XAL00
LLH02XAL001		✓	LLS25N02XAL001	LLS25C02XAL001	LLS25G02XAL001	LLS25M02XAL001	LLS25W02XAL001	LLS25V02XAL001	LLS25E02XAL001
LLH02XAL02	Black	✗	LLS25N02XAL02	LLS25C02XAL02	LLS25G02XAL02	LLS25M02XAL02	LLS25W02XAL02	LLS25V02XAL02	LLS25E02XAL02
LLH02XAL021		✓	LLS25N02XAL021	LLS25C02XAL021	LLS25G02XAL021	LLS25M02XAL021	LLS25W02XAL021	LLS25V02XAL021	LLS25E02XAL021

LLC25: compatible holders

LLH02HELO*



Clear holder

Without adhesive: LLH02HEL00



Black holder

Without adhesive: LLH02HEL02

Without adhesive:

With adhesive:

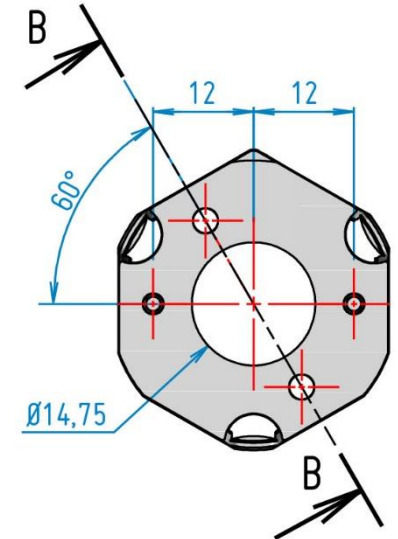
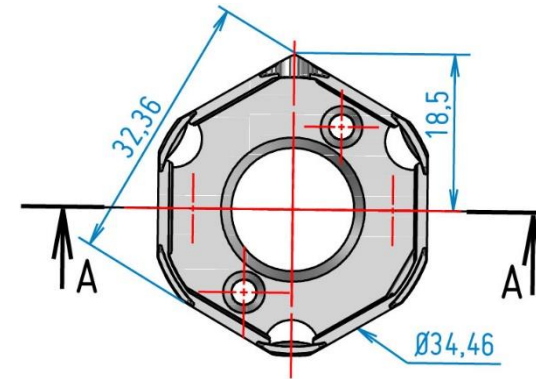
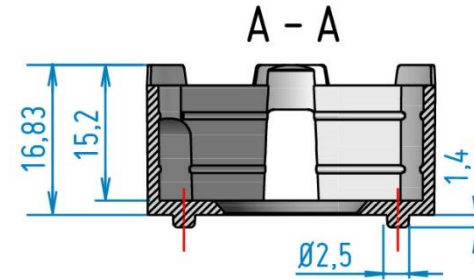
With adhesive: LLH02HEL001

With adhesive: LLH02HEL021

Reference	Diameter (mm)	Nominal distance from PCB (mm)	Note
LLH02HELO*	32	0.5	With pins, screws inside

* : colors 0 (clear), 2 (black)

If you need another color of holder, please [contact us](#)



All dimensions are in millimeters.

General tolerance +/- 0.1mm (standard NF T 58-000 cat. 4, reduced class).



Positioning holes need to be created into the PCB.

LLC25: new compatible

LLH02B* &



LLH02B* have been designed to offer a reduced footprint and compatibility with High-power LEDs and COBs of up to 6mm LES

Note : Fixing is still possible either with screws or with adhesive

COB
COMPATIBILITY

REDUCED
FOOTPRINT

HIGH POWER

Ø	RANGE	DISTANCE BETWEEN PINS	LETTER	NOMINAL DISTANCE	LETTER	REFERENCE	DESCRIPTION	COMPATIBILITE			
LLH02	A	13,6	A	0,25	A	LLH02BAA00	HOLDER COL 32 CLEAR	Non compatible LLC05/LLC15			
						LLH02BAA001	HOLDER COL 32 CLEAR ADH				
						LLH02BAA02	HOLDER COL 32 BLACK				
						LLH02BAA021	HOLDER COL 32 BLACK ADH				
		21,5	B			24	C	LLH02BBA00	HOLDER COL 32 CLEAR		
								LLH02BBA001	HOLDER COL 32 CLEAR ADH		
								LLH02BBA02	HOLDER COL 32 BLACK		
								LLH02BBA021	HOLDER COL 32 BLACK ADH		
		B	13,6			A	0,5	B	LLH02BCA00	HOLDER COL 32 CLEAR	
									LLH02BCA001	HOLDER COL 32 CLEAR ADH	
									LLH02BCA02	HOLDER COL 32 BLACK	
									LLH02BCA021	HOLDER COL 32 BLACK ADH	
	21,5		B	24	C	LLH02BAB00			HOLDER COL 32 CLEAR	Non compatible LLC05/LLC15	
						LLH02BAB001			HOLDER COL 32 CLEAR ADH		
						LLH02BAB02			HOLDER COL 32 BLACK		
						LLH02BAB021			HOLDER COL 32 BLACK ADH		
	24	C	0,65	C	LLH02BBB00	HOLDER COL 32 CLEAR					
					LLH02BBB001	HOLDER COL 32 CLEAR ADH					
					LLH02BBB02	HOLDER COL 32 BLACK					
					LLH02BBB021	HOLDER COL 32 BLACK ADH					
	C	21,5	B	0,65	C	LLH02BCB00	HOLDER COL 32 CLEAR				
						LLH02BCB001	HOLDER COL 32 CLEAR ADH				
						LLH02BCB02	HOLDER COL 32 BLACK				
						LLH02BCB021	HOLDER COL 32 BLACK ADH				
24		C	0,65			LLH02BCC00	HOLDER COL 32 CLEAR				
						LLH02BCC001	HOLDER COL 32 CLEAR ADH				
						LLH02BCC02	HOLDER COL 32 BLACK				
						LLH02BCC021	HOLDER COL 32 BLACK ADH				

COB

Ø	RANGE	COMPATIBILITY	REFERENCES	DESCRIPTION
LLH02	C	Bender+Wirth	LLH02CB100	HOLDER COL 32 CLEAR
			LLH02CB102	HOLDER COL 32 BLACK
		TE+BJB	LLH02CB400	HOLDER COL 32 CLEAR
			LLH02CB402	HOLDER COL 32 BLACK

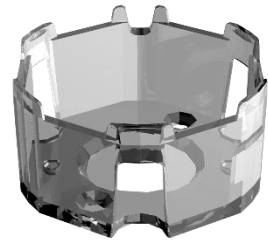
LLC25: Assembled set

LLH02HELO* + LLC25x

Holder	Color	Adhesive	Narrow LLC25N	Color LLC25C	Wall grazing LLC25G	Medium LLC25M	Wide LLC25W	Very large LLC25V	Elliptical LLC25E
LLH02HELO0	Clear	✗	LLS25N02HELO0	LLS25C02HELO0	LLS25G02HELO0	LLS25M02HELO0	LLS25W02HELO0	LLS25V02HELO0	LLS25E02HELO0
LLH02HELO01		✓	LLS25N02HELO01	LLS25C02HELO01	LLS25G02HELO01	LLS25M02HELO01	LLS25W02HELO01	LLS25V02HELO01	LLS25E02HELO01
LLH02HELO2	Black	✗	LLS25N02HELO2	LLS25C02HELO2	LLS25G02HELO2	LLS25M02HELO2	LLS25W02HELO2	LLS25V02HELO2	LLS25E02HELO2
LLH02HELO21		✓	LLS25N02HELO21	LLS25C02HELO21	LLS25G02HELO21	LLS25M02HELO21	LLS25W02HELO21	LLS25V02HELO21	LLS25E02HELO21

LLC25: compatible holders

LLH02RD10*



Clear holder

Without adhesive:
LLH02RD100



Black holder

Without adhesive:
LLH02RD102

Without adhesive:

With adhesive:

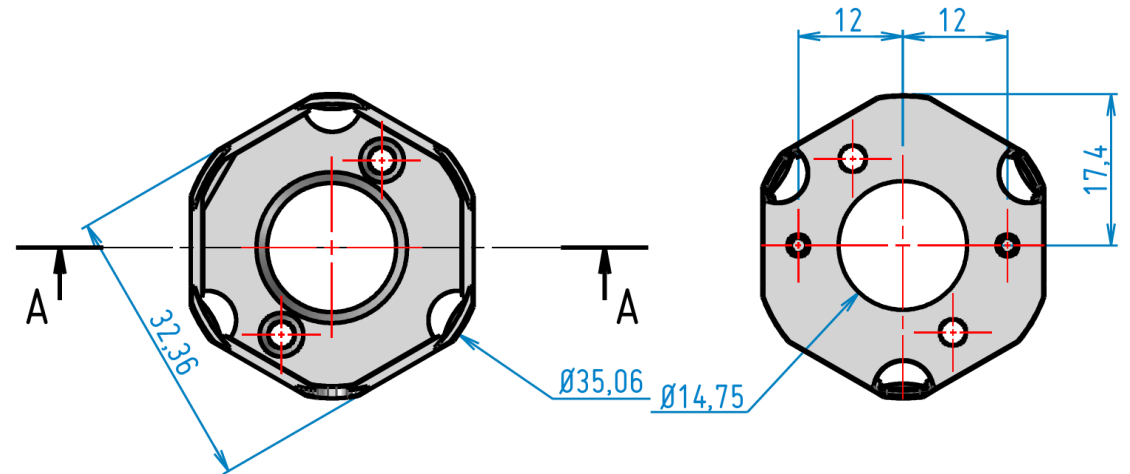
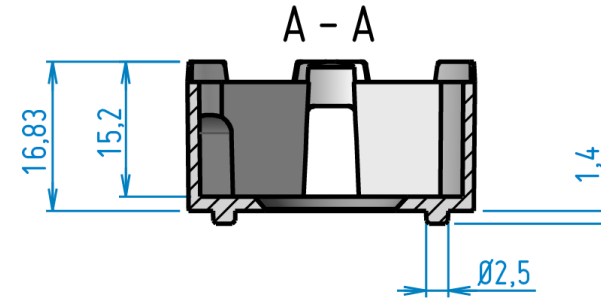
With adhesive:
LLH02RD1001

With adhesive:
LLH02RD1021

Reference	Diameter (mm)	Nominal distance from PCB (mm)	Note
LLH02RD10*	32	0.5	With pins, screws inside, rounded

* : colors 0 (clear), 2 (black)

If you need another color of holder, please [contact us](#)



All dimensions are in millimeters.

General tolerance +/- 0.1mm (standard NF T 58-000 cat. 4, reduced class).



Positioning holes need to be created into the PCB.

LLC25: Assembled set

LLH02RD10* + LLC25x

Holder	Color	Adhesive	Narrow LLC25N	Color LLC25C	Wall grazing LLC25G	Medium LLC25M	Wide LLC25W	Very large LLC25V	Elliptical LLC25E
LLH02RD100	Clear	✗	LLS25N02RD100	LLS25C02RD100	LLS25G02RD100	LLS25M02RD100	LLS25W02RD100	LLS25V02RD100	LLS25E02RD100
LLH02RD1001		✓	LLS25N02RD1001	LLS25C02RD1001	LLS25G02RD1001	LLS25M02RD1001	LLS25W02RD1001	LLS25V02RD1001	LLS25E02RD1001
LLH02RD102	Black	✗	LLS25N02RD102	LLS25C02RD102	LLS25G02RD102	LLS25M02RD102	LLS25W02RD102	LLS25V02RD102	LLS25E02RD102
LLH02RD1021		✓	LLS25N02RD1021	LLS25C02RD1021	LLS25G02RD1021	LLS25M02RD1021	LLS25W02RD1021	LLS25V02RD1021	LLS25E02RD1021

LLC25: compatible holders

LLH02MTB0*



Clear holder

Without adhesive: LLH02MTB00

Without adhesive:



Black holder

Without adhesive: LLH02MTB02

With adhesive:

With adhesive: LLH02MTB001

With adhesive: LLH02MTB021

Reference	Diameter (mm)	Nominal distance from PCB (mm)	Note
-----------	---------------	--------------------------------	------

LLH02MTB0*

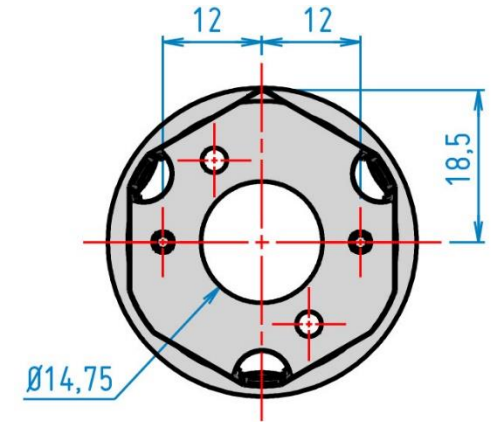
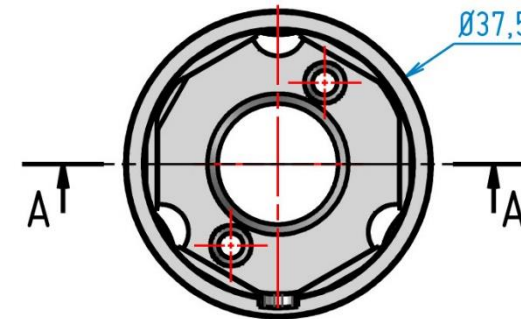
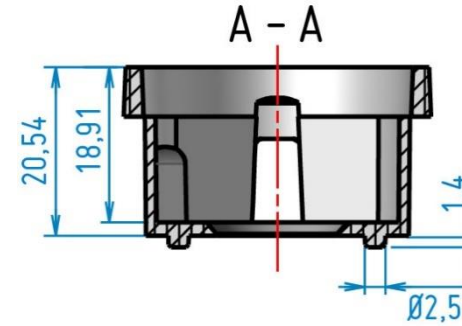
32

0.5

With pins, screws inside, rounded snout

* : colors 0 (clear), 2 (black)

If you need another color of holder, please [contact us](#)



All dimensions are in millimeters.

General tolerance +/- 0.1mm (standard NF T 58-000 cat. 4, reduced class).



Positioning holes need to be created into the PCB.

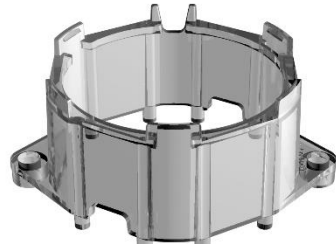
LLC25: Assembled set

LLH02MTB0* + LLC25x

Holder	Color	Adhesive	Narrow LLC25N	Color LLC25C	Wall grazing LLC25G	Medium LLC25M	Wide LLC25W	Very large LLC25V	Elliptical LLC25E
LLH02MTB00	Clear	✗	LLS25N02MTB00	LLS25C02MTB00	LLS25G02MTB00	LLS25M02MTB00	LLS25W02MTB00	LLS25V02MTB00	LLS25E02MTB00
LLH02MTB001		✓	LLS25N02MTB001	LLS25C02MTB001	LLS25G02MTB001	LLS25M02MTB001	LLS25W02MTB001	LLS25V02MTB001	LLS25E02MTB001
LLH02MTB02	Black	✗	LLS25N02MTB02	LLS25C02MTB02	LLS25G02MTB02	LLS25M02MTB02	LLS25W02MTB02	LLS25V02MTB02	LLS25E02MTB02
LLH02MTB021		✓	LLS25N02MTB021	LLS25C02MTB021	LLS25G02MTB021	LLS25M02MTB021	LLS25W02MTB021	LLS25V02MTB021	LLS25E02MTB021

LLC25: compatible holders

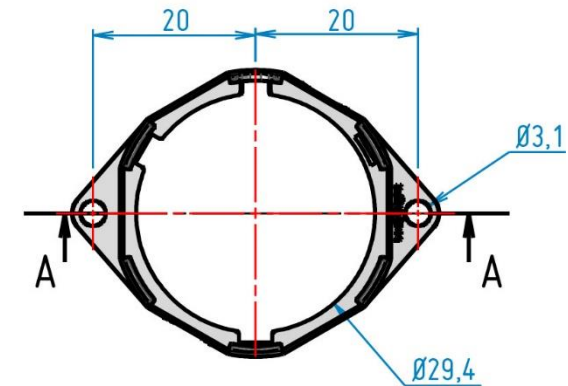
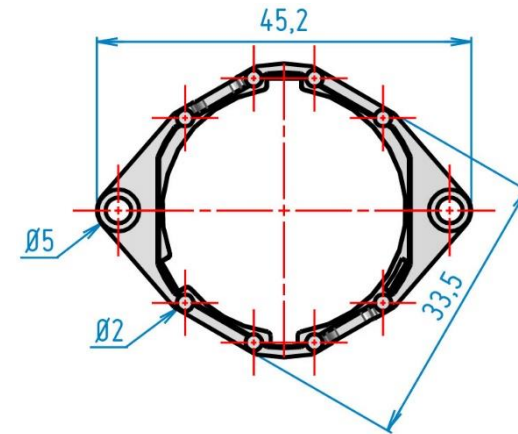
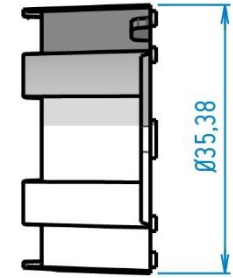
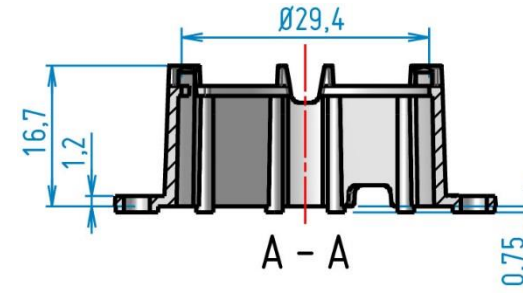
LLH02AAC0*



Clear holder

LLH02AAC00

Without adhesive:



Reference	Diameter (mm)	Nominal distance from PCB (mm)	Note
LLH02AAC0*	32	0.99	Without pins, screws outside

* : colors 0 (clear), 2 (black)

If you need another color of holder, please [contact us](#)

All dimensions are in millimeters.

General tolerance +/- 0.1mm (standard NF T 58-000 cat. 4, reduced class).



Positioning holes need to be created into the PCB.

LLC25: Assembled set

LLH02AAC0* + LLC25x

Holder	Color	Adhesive	Narrow LLC25N	Color LLC25C	Wall grazing LLC25G	Medium LLC25M	Wide LLC25W	Very large LLC25V	Elliptical LLC25E
LLH02AAC00	Clear	✗	LLS25N02AAC00	LLS25C02AAC00	LLS25G02AAC00	LLS25M02AAC00	LLS25W02AAC00	LLS25V02AAC00	LLS25E02AAC00

LLC25: Nominal distance

Nominal distance from PCB surface to best focus point of optic

Achieving an optimal focus position of the lens is the key factor for a successful LED/Collimator integration.

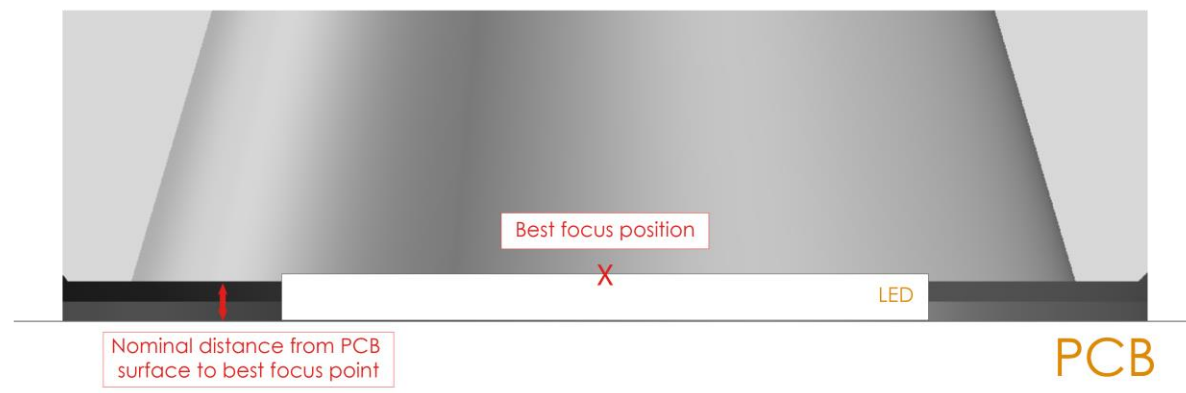
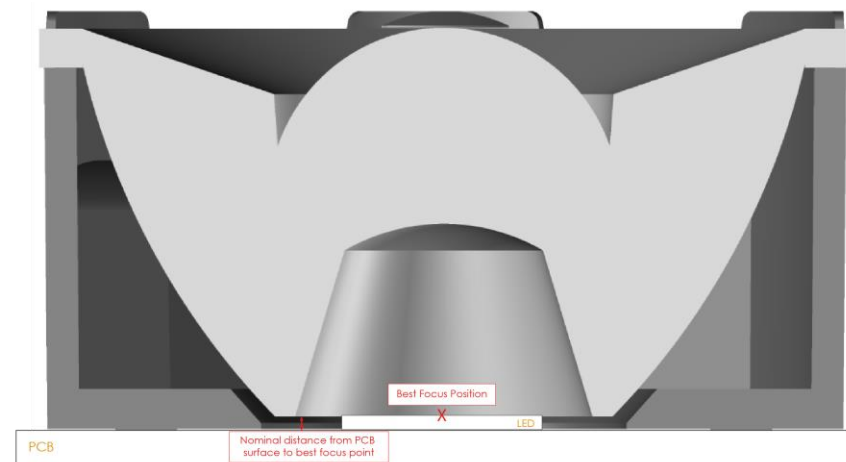
The best focus position will be achieved when matching the collimator's focus position with LED's Light Emission Surface position.

Different holder references will achieve specific PCB to Collimator's focus point distance in order to adapt to the considered LED.

Reference	Diameter (mm)	Nominal distance from PCB (mm)	Note
LLH02XALO*	32	0.25	With pins
LLH02HELO*	32	0.5	With pins, screws inside
LLH02RD10*	32	0.5	With pins, screws inside, rounded
LLH02MTB0*	32	0.5	With pins, screws inside, rounded snoot
LLH02AAC0*	32	0.99	With pins

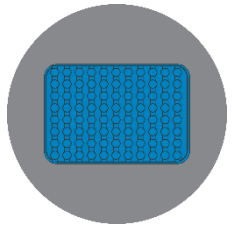
* : colors 0 (clear), 2 (black)

If you need another color of holder, please [contact us](#)



LLC25: Packaging

LLC25x



10 thermoformed trays with 50 parts each



500 parts
Box: GALIA A13 – 387x283x170 mm
Weight: 5.2 kg

LLC25: Packaging

LLH02AAC0*



1 plastic bag with 3 000 parts
Box: GALIA A9 - 589x385x287 mm
Weight: 9.2 kg

LLH02MTB0*



1 plastic bag with 3 000 parts
Box: GALIA A9 - 589x385x287 mm
Weight: 11.8 kg

LLH02XAL



1 plastic bag with 3 000 parts
Box: GALIA A9 - 589x385x287 mm
Weight: 11.8 kg

LLH02HELO*



1 plastic bag with 3 000 parts
Box: GALIA A9 - 589x385x287 mm
Weight: 11.8 kg

LLH02RD10*



1 plastic bag with 3 000 parts
Box: GALIA A9 - 589x385x287 mm
Weight: 11.8 kg

Code form standard range

LENS

OPTICAL

- 01: 16 mm
- 02: 16 mm
- 12: 16 mm
- 22: 16 mm RGBW
- 05: 32 mm
- 15: 32 mm
- 25: 32 mm RGBW
- 07: 35 mm
- 45: 45 mm UFO
- 49: 45 mm RGBW
- 59: 45 mm RGBW gen 2
- 56: 67mm in PMMA
- 66: 67 mm in silicone
- 76: 67mm in silicone
- 67: 67 mm UFO

PRODUCT

- LLC: Collimator
- LLH: Holder
- LLL: Linear collimator
- LLR: Reflector
- LLS: Set
- UFO: Ultra Flat Optic

BEAM ANGLE

- U/R: Ultra Narrow
- N: Narrow
- M: Medium
- W: Wide
- X: Extra large
- S: Super large
- L: Large
- V: Very large
- E: Elliptical
- Z: Zoom

MATERIAL

- 0 or nothing : PMMA
- 1: PC
- 2: PC anti-UV
- 7: Silicone

LLS01W01ABC001

ABC: Holder type according to LED package

COLORS & DECORS

- 0: Translucent
- 1: White
- 2: Black

ADHESIVE OPTION

- 1: Yes
- Nothing: No

VERSION

TYPE

- 1: 16mm
- 2: 32mm
- 3: 3x16mm
- 4: 4x16mm
- 9: 45mm

HOLDER

Contact us

GAGGIONE SAS Headquarter

3, Rue de la Rolland
01460 Montréal la Cluse
France

☎ +33 4 74 76 12 66
@ contact@gaggione.com
🌐 www.optic-gaggione.com

Sales Team in GAGGIONE

Sandrine Mancuso
France, UK, Italy, Spain

@ s.mancuso@gaggione.com
☎ +33 787 87 84 72

Nicolas Golfier
France, Scandinavia,
Eastern and Northern Europe

@ n.golfier@gaggione.com
☎ +33 677 35 50 37

Sonia Andres
France, Spain

@ s.andres@gaggione.com
☎ +33 607 37 20 28

Laurent Barel
Sales & Marketing Director

@ l.barel@gaggione.com
☎ +33 612 04 41 30

International Sales Offices

GAGGIONE Americas
Michael Pietro
12833 Surrey Ct.
Palos Park, IL
60464

@ m.pietro@gaggione.com
☎ +1 224 392 0087

GAGGIONE Asia
Zhen Xu
Unit 1808, No. 8, Kuaiji Road,
Jintiandi International building,
Huangpu District,
Shanghai, 200021, China

@ z.xu@gaggione.com
☎ +86 136 5189 6981

GAGGIONE Canada
Stephane Saindon
744 36th Avenue
Montreal, Quebec
H8T3L2

@ s.saindon@gaggione.com
☎ +1 514 928 2179

GAGGIONE DACH
Angelika Aigner
Kreuzstrasse 7
83355 Grabenstätt
Germany

@ a.aigner@gaggione.com
☎ +49 8661 983 44 77

Product Management & Business development

Joni MÄKI
Artunkuja 7,
24260 Salo
FINLAND

@ j.maki@gaggione.com
☎ +33 6 38 24 17 51