

**BENDER  
+ WIRTH**

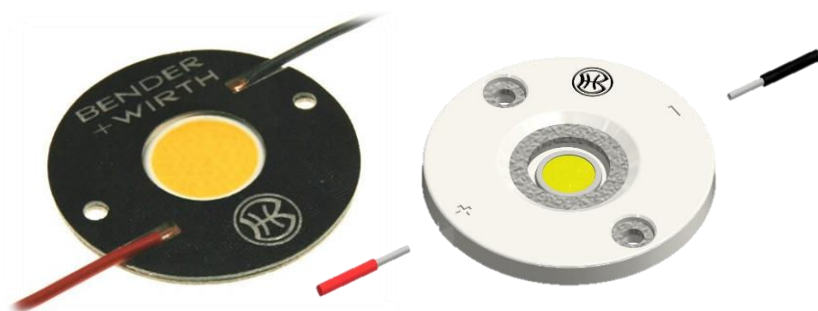
**LED HALTER SERIE 430 + 630**  
LED HOLDER SERIES 430 + 630

## Katalog der Standardhalter für **GAGGIONE** Optiken

Catalogue of standard  
holders for **GAGGIONE**  
optics

**UNSER KONZEPT  
FÜR IHRE  
INDIVIDUELLE  
LED MONTAGE**

**OUR CONCEPT  
FOR YOUR  
INDIVIDUAL  
LED MOUNTING**



**GAGGIONE**



Hersteller / Supplier	Optik / Optics	Halter Typ / holder type	Seite / Page
<b>COB Halter Hybrid 630 / COB Holder Hybrid 630</b>			
<b>Lowprofile</b>		<i>6xxz LowProfile</i>	4
<b>Bayonet50</b>	<i>Gaggione LLRx7M</i>	<i>6xxz Bayonet50</i>	9
<b>Bayonet50G</b>	<i>Gaggione B50G System</i>	<i>6xxz Bayonet50G</i>	14
	<i>HADAR70 (-ZOOM)</i>		
	<i>LLC66</i>		
	<i>LLC79</i>		
	<i>VEGA45</i>		
	<i>SIRIUS50 (-ZOOM)</i>		
	<i>UFO45 (-ZOOM)</i>		
	<i>UFO67 (-ZOOM)</i>		
<b>LED Halter 430 / LED Holder 430</b>			
<b>Basishalter / Standard holders</b>		<i>4xx Typ xx</i>	19
<b>Gaggione</b>	<i>LLR01N</i>	<i>4xx Typ G1</i>	25
	<i>LLR05N</i>	<i>4xx Typ G2</i>	29
	<i>LLH66B1 B50G System</i>	<i>4xx Typ Z1</i>	35
	<i>HADAR70 (-ZOOM)</i>		
	<i>LLC66</i>		
	<i>LLC79</i>		
	<i>VEGA45</i>		
	<i>SIRIUS50 (-ZOOM)</i>		
	<i>UFO45 (-ZOOM)</i>		
	<i>UFO67 (-ZOOM)</i>		
<b>Zhaga</b>	<i>Book 3</i>	<i>4xx Typ Z1</i>	41

**Ist Ihre COB oder die gewünschte Bauform nicht aufgeführt?  
Bitte sprechen Sie uns an.**

If your COB or requested shape is not listed, please contact us.

**Die dargestellten Halter / Reflektor Kombinationen zeigen lediglich die technische Machbarkeit. Technische Daten und Montagehinweise sind in unserem Technical Guide LED Halter Serie 430 und 630 aufgeführt. Die Kabelaustritte an den Haltern sind abhängig vom verwendeten COB. Optische Daten und Datenblätter gibt es auf Anfrage nach Verfügbarkeit beim Reflektorhersteller.**

The illustrated holder / reflector combinations only show the technical feasibility.

Technical data and mounting instructions are listed in our

Technical Guide LED holder series 430 and 630.

The cable exits of the holders are pending on the COB.

Optical data and datasheets are available upon request and availability by the reflector manufacturer.

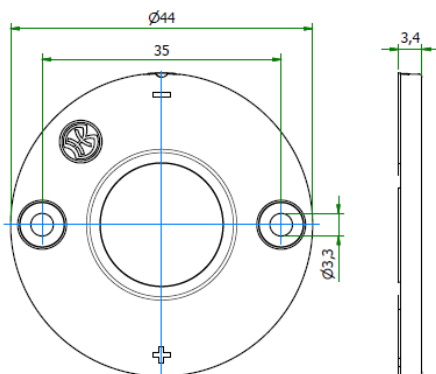
**Die Informationen in diesem Dokument sind ohne Gewähr und können ohne Vorankündigung geändert werden.**

The information in this document is provided without liability and subject to change without notice.

Gehäusetyp: Housing:	<b>LowProfile</b>	Größe / Size : 44/50 mm Höhe / Height : 3,4 mm
-------------------------	-------------------	---

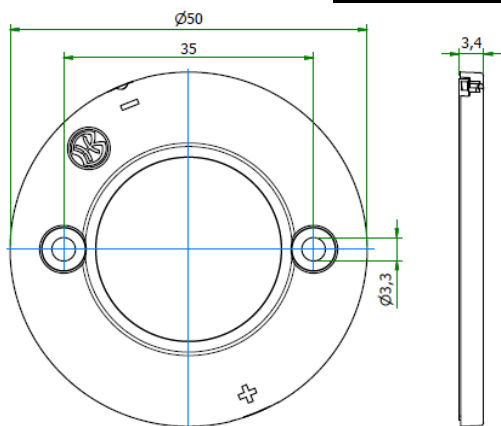
**Beispiele für passende Optiken**  
**examples of suitable optics**

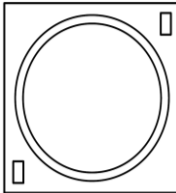


633a/47590 ( 2 : 1 ) Version 1: 633x, 634x, 637x, 638x, 641x, 652x, 660x



631a/47584 ( 2 : 1 )

Version 2: 631x, 632x, 639x, 663x



<b>Bemessungsspannung</b> rated voltage	Standard 250V DC optional 450V DC	<b>Zulässige COB Abmessungen</b> Permissible COB dimensions
<b>Bemessungsstrom</b> rated current	5 A	 <p>siehe Einzeldatenblätter im Online Katalog see data sheets at our web catalogue</p>
<b>Bemessungstemperatur</b> rated operating temperature	T 120	
<b>Befestigung</b> fixing	2 Schrauben M3 2 screws M3	<p><b>Zertifikate / certificates</b></p>  <p>Ausweis-Nr.  File E4729</p>
<b>max. Drehmoment</b> max. torque	0,5 Nm	
<b>Material des Halters</b> material of the holder	PBT / Mikanit	
<b>Kontaktmaterial</b> contactmaterial	CuSn	

Weitere technische Daten und Montagehinweise sind im [Technical Guide COB Halterserie 630](#) enthalten.  
 Further technical details and mounting instructions are part of the [Technical Guide COB holder series 630](#).

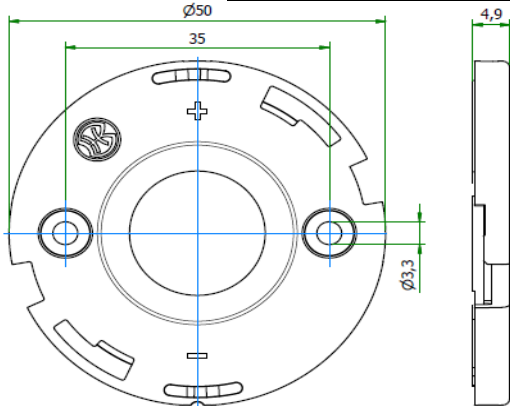

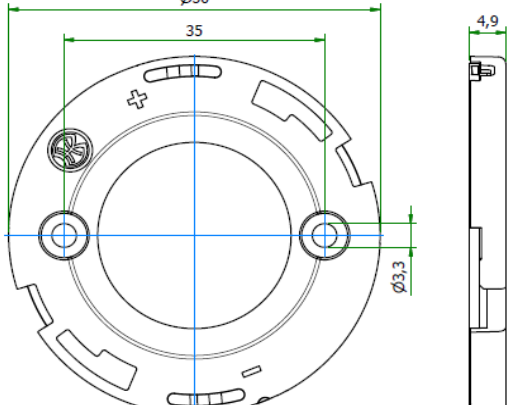

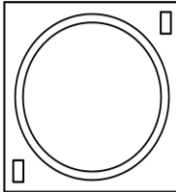


Teilumhüllter Halter für folgende COBs / unenclosed holder for the following COBs:			
Hersteller supplier	COB Typ COB Type	Teile-Nr. part no.	Haltervariante variant of holder
Bridgelux	V3 HD / V4 HD Gen 7,8	<b>47954</b>	COB Holder Hybrid 660a LowProfile
Bridgelux	V6 HD Gen 7,8	<b>47870</b>	COB Holder Hybrid 634c LowProfile
Bridgelux	V9 HD / V11 HD Gen 7,8	<b>47862</b>	COB Holder Hybrid 633d LowProfile
Bridgelux	V6 Gen 8,9 (just 2 pads!)	<b>47954</b>	COB Holder Hybrid 660a LowProfile
Bridgelux	V8 Gen 7,8,9 (4 pads)	<b>47954</b>	COB Holder Hybrid 660a LowProfile
Bridgelux	V10 Gen 7,8,9	<b>47866</b>	COB Holder Hybrid 634b LowProfile
Bridgelux	V13 Gen 7,8,9	<b>47861</b>	COB Holder Hybrid 633c LowProfile
Bridgelux	V18 Gen 7,8,9	<b>47884</b>	COB Holder Hybrid 639b LowProfile
Bridgelux	V22 Gen 7,8,9	<b>47856</b>	COB Holder Hybrid 631b LowProfile
Bridgelux	Vesta DTW 6/9mm Gen 1,2	<b>47894</b>	COB Holder Hybrid 652b LowProfile
Bridgelux	Vesta DTW 13/15mm Gen 1,2	<b>47860</b>	COB Holder Hybrid 632b LowProfile
Bridgelux	Vesta DTW 18mm Gen 1	<b>on request</b>	COB Holder Hybrid 639c LowProfile
Bridgelux	Vesta Tunable 9mm Gen 2	<b>on request</b>	Werkzeug fehlt / Tooling required
Bridgelux	Vesta Tunable 13mm Gen 2	<b>on request</b>	Werkzeug fehlt / Tooling required
Citizen	CLU 028 / 02J / 02Q	<b>47659</b>	COB Holder Hybrid 634a LowProfile
Citizen	CLU 038 / 03H / 03J / 03Q	<b>47590</b>	COB Holder Hybrid 633a LowProfile
Citizen	CLU 048 / 04H / 04J / 04Q	<b>47584</b>	COB Holder Hybrid 631a LowProfile
Citizen	CLU 7L3 / 7S3	<b>on request</b>	Werkzeug fehlt / Tooling required
Citizen	CLU 702 / 703 / 7A2 / 7A3 / 7B2	<b>47659</b>	COB Holder Hybrid 634a LowProfile
Citizen	CLU 712 / 713	<b>47861</b>	COB Holder Hybrid 633c LowProfile
Citizen	CLU 723	<b>47861</b>	COB Holder Hybrid 633c LowProfile
Citizen	CLU 733	<b>47856</b>	COB Holder Hybrid 631b LowProfile
CREE	CHA 0304 / 0410 / 0612	<b>47659</b>	COB Holder Hybrid 634a LowProfile
CREE	CHA 0825	<b>47590</b>	COB Holder Hybrid 633a LowProfile
CREE	CMA 1303 / 1306	<b>47870</b>	COB Holder Hybrid 634c LowProfile
CREE	CMA 1516	<b>47462</b>	COB Holder Hybrid 641a LowProfile
CREE	CMA 1825 / 1840	<b>47471</b>	COB Holder Hybrid 637a LowProfile
CREE	CMA 2550	<b>47586</b>	COB Holder Hybrid 639a LowProfile
CREE	CMB 1304 / 1306	<b>47870</b>	COB Holder Hybrid 634c LowProfile
CREE	CMB 1507 / 1510 / 1516	<b>47462</b>	COB Holder Hybrid 641a LowProfile
CREE	CMB 1818 / 1825	<b>47471</b>	COB Holder Hybrid 637a LowProfile
CREE	CMB 1840	<b>47874</b>	COB Holder Hybrid 637b LowProfile
CREE	CMB 2550	<b>47586</b>	COB Holder Hybrid 639a LowProfile
CREE	CMT 1407 / 1412 / 1420	<b>47659</b>	COB Holder Hybrid 634a LowProfile
CREE	CMT 1922 / 1925 / 1930 / 1945	<b>47861</b>	COB Holder Hybrid 633c LowProfile
CREE	CMT 2850 / 2870 / 2890	<b>47856</b>	COB Holder Hybrid 631b LowProfile
CREE	CMU 1003 / 1006 / 1010 / 1013	<b>47659</b>	COB Holder Hybrid 634a LowProfile
CREE	CMU 1516 / 1519 / 1526 / 1532	<b>47590</b>	COB Holder Hybrid 633a LowProfile
CREE	CMU 2236 / 2239 / 2258 / 2287	<b>47856</b>	COB Holder Hybrid 631b LowProfile
CREE	CXB 1304 / 1310	<b>47870</b>	COB Holder Hybrid 634c LowProfile

CREE	CXB 1507 / 1512 / 1520	<b>47462</b>	COB Holder Hybrid 641a	LowProfile
CREE	CXB 1816 / 1820	<b>47471</b>	COB Holder Hybrid 637a	LowProfile
CREE	CXB 1830	<b>47874</b>	COB Holder Hybrid 637b	LowProfile
CREE	CXB 2530 / 2540	<b>47586</b>	COB Holder Hybrid 639a	LowProfile
Edison	2PHE 03 / 06 / 09 / 13	<b>47659</b>	COB Holder Hybrid 634a	LowProfile
Edison	2PHE 15 / 18 / 24 / 30	<b>47590</b>	COB Holder Hybrid 633a	LowProfile
Edison	2PHE 55 / 60 / 83	<b>47584</b>	COB Holder Hybrid 631a	LowProfile
Lextar	PB 06 / 09 / 13	<b>47659</b>	COB Holder Hybrid 634a	LowProfile
Lextar	PB 16 / 19 / 26	<b>47590</b>	COB Holder Hybrid 633a	LowProfile
Lextar	PB 38 / 54	<b>47584</b>	COB Holder Hybrid 631a	LowProfile
Lumileds	Luxeon 1202s / 1202HD	<b>47455</b>	COB Holder Hybrid 652a	LowProfile
Lumileds	Luxeon 1202 / 1203 / 1204HD	<b>47880</b>	COB Holder Hybrid 638b	LowProfile
Lumileds	Luxeon 1205HD	<b>47880</b>	COB Holder Hybrid 638b	LowProfile
Lumileds	Luxeon 1204 / 1205	<b>47581</b>	COB Holder Hybrid 632a	LowProfile
Lumileds	Luxeon 1208 / 1210	<b>47581</b>	COB Holder Hybrid 632a	LowProfile
Lumileds	Luxeon 1211	<b>47856</b>	COB Holder Hybrid 631b	LowProfile
Lumileds	Luxeon 1213 / 1216 / 1812 / 1816	<b>47856</b>	COB Holder Hybrid 631b	LowProfile
Lumileds	CS COB L02 / L04	<b>47659</b>	COB Holder Hybrid 634a	LowProfile
Lumileds	CS COB L06 / L08 / L10	<b>47590</b>	COB Holder Hybrid 633a	LowProfile
Lumileds	CS COB L11 / L13 / L16	<b>47584</b>	COB Holder Hybrid 631a	LowProfile
Lumileds	CS COB R12 / R18	<b>47584</b>	COB Holder Hybrid 631a	LowProfile
Lumileds	CX Plus HD S01H4, S0xH6	<b>47870</b>	COB Holder Hybrid 634c	LowProfile
Lumileds	CX Plus HD S04H9	<b>47866</b>	COB Holder Hybrid 634b	LowProfile
Lumileds	CX Plus S01Fx / S02Fx	<b>47870</b>	COB Holder Hybrid 634c	LowProfile
Lumileds	CX Plus M02Fx / M03Fx	<b>47462</b>	COB Holder Hybrid 641a	LowProfile
Lumileds	CX Plus L04Fx / L05Fx / L08Fx	<b>47471</b>	COB Holder Hybrid 637a	LowProfile
Luminus	CXM-3-xC	<b>47659</b>	COB Holder Hybrid 634a	LowProfile
Luminus	CHM-4-BH / CXM-4-xC	<b>47659</b>	COB Holder Hybrid 634a	LowProfile
Luminus	CHM-6-BH / CXM-6-xC	<b>47659</b>	COB Holder Hybrid 634a	LowProfile
Luminus	CIM/CLM/CXM-9-xC	<b>47659</b>	COB Holder Hybrid 634a	LowProfile
Luminus	CHM-9-BH	<b>47590</b>	COB Holder Hybrid 633a	LowProfile
Luminus	CXM-11-xC	<b>47590</b>	COB Holder Hybrid 633a	LowProfile
Luminus	CGM/CIM/CLM/CXM-14-xC	<b>47590</b>	COB Holder Hybrid 633a	LowProfile
Luminus	CXM-18 Gen6	<b>47584</b>	COB Holder Hybrid 631a	LowProfile
Luminus	CGM/CIM/CLM/CXM-22-xC	<b>47584</b>	COB Holder Hybrid 631a	LowProfile
Luminus	CDM-6 / CDM-9Gen1 DtW	<b>47894</b>	COB Holder Hybrid 652b	LowProfile
Luminus	CDM-9 Gen2 DtW	<b>47860</b>	COB Holder Hybrid 632b	LowProfile
Luminus	CDM-14/CDM-18 DtW	<b>47860</b>	COB Holder Hybrid 632b	LowProfile
Luxtech	COB-WD-10-1512	<b>47899</b>	COB Holder Hybrid 652c	LowProfile
Luxtech	COB-WD-17-2420	<b>47581</b>	COB Holder Hybrid 632a	LowProfile
Nichia	NV..S007Z / NF..T012B	<b>47455</b>	COB Holder Hybrid 652a	LowProfile
Nichia	NF..S024B / NT..S024B	<b>47455</b>	COB Holder Hybrid 652a	LowProfile
Nichia	NJ..S024Z	<b>47455</b>	COB Holder Hybrid 652a	LowProfile

Nichia	NV..L016Z / NV..L024Z	<b>47465</b>	COB Holder Hybrid 638a	LowProfile
Nichia	NF..L036B / NF..L048B	<b>47465</b>	COB Holder Hybrid 638a	LowProfile
Nichia	NF..L060B	<b>47465</b>	COB Holder Hybrid 638a	LowProfile
Nichia	NV..J048Z / NF..J108B	<b>47953</b>	COB Holder Hybrid 663a	LowProfile
Nichia	NF..J130B	<b>47953</b>	COB Holder Hybrid 663a	LowProfile
Prolight Opto	PASB	<b>47659</b>	COB Holder Hybrid 634a	LowProfile
Prolight Opto	PASQ/PAPQ DimToWarm	<b>47659</b>	COB Holder Hybrid 634a	LowProfile
Prolight Opto	PDSQ DimToWarm	<b>47894</b>	COB Holder Hybrid 652b	LowProfile
Prolight Opto	PDSR DimToWarm	<b>47860</b>	COB Holder Hybrid 632b	LowProfile
Samsung	LC 010C	<b>47659</b>	COB Holder Hybrid 634a	LowProfile
Samsung	LC 020C / 030C / 040C	<b>47861</b>	COB Holder Hybrid 633c	LowProfile
Samsung	LC 003D / 006D	<b>47659</b>	COB Holder Hybrid 634a	LowProfile
Samsung	LC 009D / 013D	<b>47659</b>	COB Holder Hybrid 634a	LowProfile
Samsung	LC 016D / 019D	<b>47861</b>	COB Holder Hybrid 633c	LowProfile
Samsung	LC 026D / 033D	<b>47861</b>	COB Holder Hybrid 633c	LowProfile
Samsung	LC 040D / 060D / 080D	<b>47856</b>	COB Holder Hybrid 631b	LowProfile
Seoul	SAW* 0661	<b>47866</b>	COB Holder Hybrid 634b	LowProfile
Seoul	SAW* 1062 / 1063	<b>47866</b>	COB Holder Hybrid 634b	LowProfile
Seoul	SAW* 1564 / 1565 / 1566	<b>47861</b>	COB Holder Hybrid 633c	LowProfile
Seoul	SAW* 22AA / 2296	<b>47584</b>	COB Holder Hybrid 631a	LowProfile
Seoul	SAW* 2298 / 226A	<b>47584</b>	COB Holder Hybrid 631a	LowProfile
Signify	Fortimo SLM12xx .. 1215 G7	<b>47455</b>	COB Holder Hybrid 652a	LowProfile
Signify	Fortimo SLM12xx .. 1619 G7	<b>47880</b>	COB Holder Hybrid 638b	LowProfile
Signify	Fortimo SLM12xx .. 2024 G7	<b>47581</b>	COB Holder Hybrid 632a	LowProfile
Signify	Fortimo SLM12xx .. 2828 G7	<b>47856</b>	COB Holder Hybrid 631b	LowProfile
Signify	Fortimo SLM12xx .. 1313 G7N	<b>47659</b>	COB Holder Hybrid 634a	LowProfile
Signify	Fortimo SLM12xx .. 1919 G7N	<b>47590</b>	COB Holder Hybrid 633a	LowProfile
Signify	Fortimo SLM12xx .. 2828 G7N	<b>47856</b>	COB Holder Hybrid 631b	LowProfile
Signify	Fortimo SLM13xx .. 2024 G8 UHE	<b>47581</b>	COB Holder Hybrid 632a	LowProfile
Signify	Fortimo SLM13xx .. 2828 G8 UHE	<b>47856</b>	COB Holder Hybrid 631b	LowProfile
Tridonic	SLE ADV8 LES 04 / 06	<b>47659</b>	COB Holder Hybrid 634a	LowProfile
Tridonic	SLE ADV8 LES 09	<b>47659</b>	COB Holder Hybrid 634a	LowProfile
Tridonic	SLE ADV8 LES 13	<b>47861</b>	COB Holder Hybrid 633c	LowProfile
Tridonic	SLE ADV8 LES 15	<b>47861</b>	COB Holder Hybrid 633c	LowProfile
Tridonic	SLE ADV8 LES 17	<b>47856</b>	COB Holder Hybrid 631b	LowProfile
Tridonic	SLE ADV8 LES 21	<b>47856</b>	COB Holder Hybrid 631b	LowProfile
Tridonic	SLE SNC8 LES 06	<b>47659</b>	COB Holder Hybrid 634a	LowProfile
Tridonic	SLE SNC8 LES 09	<b>47659</b>	COB Holder Hybrid 634a	LowProfile
Tridonic	SLE SNC8 LES 15	<b>47861</b>	COB Holder Hybrid 633c	LowProfile
VS Lighting	DMS 102 ***W	<b>47659</b>	COB Holder Hybrid 634a	LowProfile
VS Lighting	DMS 124 ***W	<b>47659</b>	COB Holder Hybrid 634a	LowProfile
VS Lighting	DMS 125 / 126 / 128 ***W	<b>47590</b>	COB Holder Hybrid 633a	LowProfile
VS Lighting	DMS 120 ***W	<b>47584</b>	COB Holder Hybrid 631a	LowProfile

VS Lighting	DMS 12C / 18B ***W	<b>47584</b>	COB Holder Hybrid 631a	LowProfile
VS Lighting	DMS 1208J	<b>47590</b>	COB Holder Hybrid 633a	LowProfile
VS Lighting	DMS 1212J / 1812J	<b>47584</b>	COB Holder Hybrid 631a	LowProfile
VS Lighting	VCA 042	<b>47866</b>	COB Holder Hybrid 634b	LowProfile
VS Lighting	VCA2 122 / 123 / 124	<b>47866</b>	COB Holder Hybrid 634b	LowProfile
VS Lighting	VCA2 126 / 128	<b>47861</b>	COB Holder Hybrid 633c	LowProfile
VS Lighting	VCA2 1211 / 1213	<b>47856</b>	COB Holder Hybrid 631b	LowProfile
VS Lighting	WU-M-618 DimToWarm	<b>47659</b>	COB Holder Hybrid 634a	LowProfile
Xicato	XOB 04	<b>47866</b>	COB Holder Hybrid 634b	LowProfile
Xicato	XOB 06 (B)	<b>47866</b>	COB Holder Hybrid 634b	LowProfile
Xicato	XOB 09	<b>47659</b>	COB Holder Hybrid 634a	LowProfile
Xicato	XOB 14	<b>47590</b>	COB Holder Hybrid 633a	LowProfile
Xicato	XOB 23	<b>47584</b>	COB Holder Hybrid 631a	LowProfile



<p>Gehäusetyp: Housing:</p>	<p><b>Bayonet50</b></p>	<p>Größe / Size : 50 mm Höhe / Height : 4,9 mm</p>															
<p>Beispiele für passende Optiken examples of suitable optics</p>	<p><b>GAGGIONE HADAR70 (Holder H41*)</b> <b>GAGGIONE LLR07M, LLR27M</b></p>																
<div style="display: flex; flex-direction: column; align-items: center;"> <div style="display: flex; justify-content: space-between; width: 100%;"> <span style="font-size: small;">633a/47420 ( 2 : 1 )</span> <span><b>Version 1: 633x, 634x, 637x, 638x, 641x, 652x, 660x</b></span> </div> <div style="display: flex; justify-content: space-around; width: 100%;">   </div> <div style="display: flex; justify-content: space-between; width: 100%; margin-top: 10px;"> <span style="font-size: small;">631a/47512 ( 2 : 1 )</span> <span><b>Version 2: 631x, 632x, 639x, 663x</b></span> </div> <div style="display: flex; justify-content: space-around; width: 100%;">   </div> </div>																	
<table border="0"> <tr> <td><b>Bemessungsspannung</b> rated voltage</td> <td><b>Standard 250V DC</b> optional 450V DC</td> </tr> <tr> <td><b>Bemessungsstrom</b> rated current</td> <td><b>5 A</b></td> </tr> <tr> <td><b>Bemessungstemperatur</b> rated operating temperature</td> <td><b>T 120</b></td> </tr> <tr> <td><b>Befestigung</b> fixing</td> <td><b>2 Schrauben M3</b> 2 screws M3</td> </tr> <tr> <td><b>max. Drehmoment</b> max. torque</td> <td><b>0,5 Nm</b></td> </tr> <tr> <td><b>Material des Halters</b> material of the holder</td> <td><b>PBT / Mikanit</b> PBT / Mica</td> </tr> <tr> <td><b>Kontaktmaterial</b> contactmaterial</td> <td><b>CuSn</b> CuSn</td> </tr> </table>		<b>Bemessungsspannung</b> rated voltage	<b>Standard 250V DC</b> optional 450V DC	<b>Bemessungsstrom</b> rated current	<b>5 A</b>	<b>Bemessungstemperatur</b> rated operating temperature	<b>T 120</b>	<b>Befestigung</b> fixing	<b>2 Schrauben M3</b> 2 screws M3	<b>max. Drehmoment</b> max. torque	<b>0,5 Nm</b>	<b>Material des Halters</b> material of the holder	<b>PBT / Mikanit</b> PBT / Mica	<b>Kontaktmaterial</b> contactmaterial	<b>CuSn</b> CuSn	<p style="text-align: center;"><b>Zulässige COB Abmessungen</b> Permissible COB dimensions</p> <div style="display: flex; align-items: center;">  <p>siehe Einzeldatenblätter im Online Katalog see data sheets at our web catalogue</p> </div> <hr/> <p style="text-align: center;"><b>Zertifikate / certificates</b></p> <div style="display: flex; align-items: center;">  <p>Ausweis-Nr.  File E4729</p> </div>	
<b>Bemessungsspannung</b> rated voltage	<b>Standard 250V DC</b> optional 450V DC																
<b>Bemessungsstrom</b> rated current	<b>5 A</b>																
<b>Bemessungstemperatur</b> rated operating temperature	<b>T 120</b>																
<b>Befestigung</b> fixing	<b>2 Schrauben M3</b> 2 screws M3																
<b>max. Drehmoment</b> max. torque	<b>0,5 Nm</b>																
<b>Material des Halters</b> material of the holder	<b>PBT / Mikanit</b> PBT / Mica																
<b>Kontaktmaterial</b> contactmaterial	<b>CuSn</b> CuSn																
<p>Weitere technische Daten und Montagehinweise sind im <a href="#">Technical Guide COB Halterserie 630</a> enthalten. Further technical details and mounting instructions are part of the <a href="#">Technical Guide COB holder series 630</a>.</p>																	

Teilumhüllter Halter für folgende COBs / unenclosed holder for the following COBs:			
Hersteller supplier	COB Typ COB Type	Teile-Nr. part no.	Haltervariante variant of holder
Bridgelux	V3 HD / V4 HD Gen 7,8	<b>47955</b>	COB Holder Hybrid 660a Bayonet50
Bridgelux	V6 HD Gen 7,8	<b>47414</b>	COB Holder Hybrid 634c Bayonet50
Bridgelux	V9 HD / V11 HD Gen 7,8	<b>47423</b>	COB Holder Hybrid 633d Bayonet50
Bridgelux	V6 Gen 8,9 (just 2 pads!)	<b>47955</b>	COB Holder Hybrid 660a Bayonet50
Bridgelux	V8 Gen 7,8,9 (4 pads)	<b>47955</b>	COB Holder Hybrid 660a Bayonet50
Bridgelux	V10 Gen 7,8,9	<b>47413</b>	COB Holder Hybrid 634b Bayonet50
Bridgelux	V13 Gen 7,8,9	<b>47422</b>	COB Holder Hybrid 633c Bayonet50
Bridgelux	V18 Gen 7,8,9	<b>47539</b>	COB Holder Hybrid 639b Bayonet50
Bridgelux	V22 Gen 7,8,9	<b>47528</b>	COB Holder Hybrid 631b Bayonet50
Bridgelux	Vesta DTW 6/9mm Gen 1,2	<b>47890</b>	COB Holder Hybrid 652b Bayonet50
Bridgelux	Vesta DTW 13/15mm Gen 1,2	<b>47857</b>	COB Holder Hybrid 632b Bayonet50
Bridgelux	Vesta DTW 18mm Gen 1	<b>on request</b>	COB Holder Hybrid 639c Bayonet50
Bridgelux	Vesta Tunable 9mm Gen 2	<b>on request</b>	Werkzeug fehlt / Tooling required
Bridgelux	Vesta Tunable 13mm Gen 2	<b>on request</b>	Werkzeug fehlt / Tooling required
Citizen	CLU 028 / 02J / 02Q	<b>47412</b>	COB Holder Hybrid 634a Bayonet50
Citizen	CLU 038 / 03H / 03J / 03Q	<b>47420</b>	COB Holder Hybrid 633a Bayonet50
Citizen	CLU 048 / 04H / 04J / 04Q	<b>47512</b>	COB Holder Hybrid 631a Bayonet50
Citizen	CLU 7L3 / 7S3	<b>on request</b>	Werkzeug fehlt / Tooling required
Citizen	CLU 702 / 703 / 7A2 / 7A3 / 7B2	<b>47412</b>	COB Holder Hybrid 634a Bayonet50
Citizen	CLU 712 / 713	<b>47422</b>	COB Holder Hybrid 633c Bayonet50
Citizen	CLU 723	<b>47422</b>	COB Holder Hybrid 633c Bayonet50
Citizen	CLU 733	<b>47528</b>	COB Holder Hybrid 631b Bayonet50
CREE	CHA 0304 / 0410 / 0612	<b>47412</b>	COB Holder Hybrid 634a Bayonet50
CREE	CHA 0825	<b>47420</b>	COB Holder Hybrid 633a Bayonet50
CREE	CMA 1303 / 1306	<b>47414</b>	COB Holder Hybrid 634c Bayonet50
CREE	CMA 1516	<b>47458</b>	COB Holder Hybrid 641a Bayonet50
CREE	CMA 1825 / 1840	<b>47468</b>	COB Holder Hybrid 637a Bayonet50
CREE	CMA 2550	<b>47538</b>	COB Holder Hybrid 639a Bayonet50
CREE	CMB 1304 / 1306	<b>47414</b>	COB Holder Hybrid 634c Bayonet50
CREE	CMB 1507 / 1510 / 1516	<b>47458</b>	COB Holder Hybrid 641a Bayonet50
CREE	CMB 1818 / 1825	<b>47468</b>	COB Holder Hybrid 637a Bayonet50
CREE	CMB 1840	<b>47534</b>	COB Holder Hybrid 637b Bayonet50
CREE	CMB 2550	<b>47538</b>	COB Holder Hybrid 639a Bayonet50
CREE	CMT 1407 / 1412 / 1420	<b>47412</b>	COB Holder Hybrid 634a Bayonet50
CREE	CMT 1922 / 1925 / 1930 / 1945	<b>47422</b>	COB Holder Hybrid 633c Bayonet50
CREE	CMT 2850 / 2870 / 2890	<b>47528</b>	COB Holder Hybrid 631b Bayonet50
CREE	CMU 1003 / 1006 / 1010 / 1013	<b>47412</b>	COB Holder Hybrid 634a Bayonet50
CREE	CMU 1516 / 1519 / 1526 / 1532	<b>47420</b>	COB Holder Hybrid 633a Bayonet50
CREE	CMU 2236 / 2239 / 2258 / 2287	<b>47528</b>	COB Holder Hybrid 631b Bayonet50
CREE	CXB 1304 / 1310	<b>47414</b>	COB Holder Hybrid 634c Bayonet50

CREE	CXB 1507 / 1512 / 1520	<b>47458</b>	COB Holder Hybrid 641a	Bayonet50
CREE	CXB 1816 / 1820	<b>47468</b>	COB Holder Hybrid 637a	Bayonet50
CREE	CXB 1830	<b>47534</b>	COB Holder Hybrid 637b	Bayonet50
CREE	CXB 2530 / 2540	<b>47538</b>	COB Holder Hybrid 639a	Bayonet50
Edison	2PHE 03 / 06 / 09 / 13	<b>47412</b>	COB Holder Hybrid 634a	Bayonet50
Edison	2PHE 15 / 18 / 24 / 30	<b>47420</b>	COB Holder Hybrid 633a	Bayonet50
Edison	2PHE 55 / 60 / 83	<b>47512</b>	COB Holder Hybrid 631a	Bayonet50
Lextar	PB 06 / 09 / 13	<b>47412</b>	COB Holder Hybrid 634a	Bayonet50
Lextar	PB 16 / 19 / 26	<b>47420</b>	COB Holder Hybrid 633a	Bayonet50
Lextar	PB 38 / 54	<b>47512</b>	COB Holder Hybrid 631a	Bayonet50
Lumileds	Luxeon 1202s / 1202HD	<b>47453</b>	COB Holder Hybrid 652a	Bayonet50
Lumileds	Luxeon 1202 / 1203 / 1204HD	<b>47876</b>	COB Holder Hybrid 638b	Bayonet50
Lumileds	Luxeon 1205HD	<b>47876</b>	COB Holder Hybrid 638b	Bayonet50
Lumileds	Luxeon 1204 / 1205	<b>47449</b>	COB Holder Hybrid 632a	Bayonet50
Lumileds	Luxeon 1208 / 1210	<b>47449</b>	COB Holder Hybrid 632a	Bayonet50
Lumileds	Luxeon 1211	<b>47528</b>	COB Holder Hybrid 631b	Bayonet50
Lumileds	Luxeon 1213 / 1216 / 1812 / 1816	<b>47528</b>	COB Holder Hybrid 631b	Bayonet50
Lumileds	CS COB L02 / L04	<b>47412</b>	COB Holder Hybrid 634a	Bayonet50
Lumileds	CS COB L06 / L08 / L10	<b>47420</b>	COB Holder Hybrid 633a	Bayonet50
Lumileds	CS COB L11 / L13 / L16	<b>47512</b>	COB Holder Hybrid 631a	Bayonet50
Lumileds	CS COB R12 / R18	<b>47512</b>	COB Holder Hybrid 631a	Bayonet50
Lumileds	CX Plus HD S01H4, S0xH6	<b>47414</b>	COB Holder Hybrid 634c	Bayonet50
Lumileds	CX Plus HD S04H9	<b>47413</b>	COB Holder Hybrid 634b	Bayonet50
Lumileds	CX Plus S01Fx / S02Fx	<b>47414</b>	COB Holder Hybrid 634c	Bayonet50
Lumileds	CX Plus M02Fx / M03Fx	<b>47458</b>	COB Holder Hybrid 641a	Bayonet50
Lumileds	CX Plus L04Fx / L05Fx / L08Fx	<b>47468</b>	COB Holder Hybrid 637a	Bayonet50
Luminus	CXM-3-xC	<b>47412</b>	COB Holder Hybrid 634a	Bayonet50
Luminus	CHM-4-BH / CXM-4-xC	<b>47412</b>	COB Holder Hybrid 634a	Bayonet50
Luminus	CHM-6-BH / CXM-6-xC	<b>47412</b>	COB Holder Hybrid 634a	Bayonet50
Luminus	CIM/CLM/CXM-9-xC	<b>47412</b>	COB Holder Hybrid 634a	Bayonet50
Luminus	CHM-9-BH	<b>47420</b>	COB Holder Hybrid 633a	Bayonet50
Luminus	CXM-11-xC	<b>47420</b>	COB Holder Hybrid 633a	Bayonet50
Luminus	CGM/CIM/CLM/CXM-14-xC	<b>47420</b>	COB Holder Hybrid 633a	Bayonet50
Luminus	CXM-18 Gen6	<b>47512</b>	COB Holder Hybrid 631a	Bayonet50
Luminus	CGM/CIM/CLM/CXM-22-xC	<b>47512</b>	COB Holder Hybrid 631a	Bayonet50
Luminus	CDM-6 / CDM-9Gen1 DtW	<b>47890</b>	COB Holder Hybrid 652b	Bayonet50
Luminus	CDM-9 Gen2 DtW	<b>47857</b>	COB Holder Hybrid 632b	Bayonet50
Luminus	CDM-14/CDM-18 DtW	<b>47857</b>	COB Holder Hybrid 632b	Bayonet50
Luxtech	COB-WD-10-1512	<b>47895</b>	COB Holder Hybrid 652c	Bayonet50
Luxtech	COB-WD-17-2420	<b>47449</b>	COB Holder Hybrid 632a	Bayonet50
Nichia	NV..S007Z / NF..T012B	<b>47453</b>	COB Holder Hybrid 652a	Bayonet50
Nichia	NF..S024B / NT..S024B	<b>47453</b>	COB Holder Hybrid 652a	Bayonet50
Nichia	NJ..S024Z	<b>47453</b>	COB Holder Hybrid 652a	Bayonet50

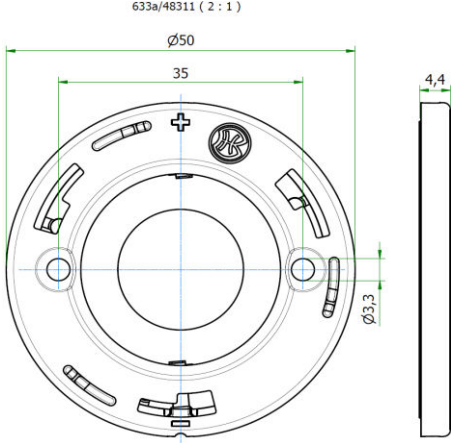


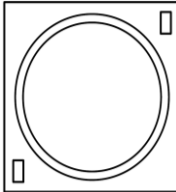


Nichia	NV..L016Z / NV..L024Z	<b>47463</b>	COB Holder Hybrid 638a	Bayonet50
Nichia	NF..L036B / NF..L048B	<b>47463</b>	COB Holder Hybrid 638a	Bayonet50
Nichia	NF..L060B	<b>47463</b>	COB Holder Hybrid 638a	Bayonet50
Nichia	NV..J048Z / NF..J108B	<b>47932</b>	COB Holder Hybrid 663a	Bayonet50
Nichia	NF..J130B	<b>47932</b>	COB Holder Hybrid 663a	Bayonet50
Prolight Opto	PASB	<b>47412</b>	COB Holder Hybrid 634a	Bayonet50
Prolight Opto	PASQ/PAPQ DimToWarm	<b>47412</b>	COB Holder Hybrid 634a	Bayonet50
Prolight Opto	PDSQ DimToWarm	<b>47890</b>	COB Holder Hybrid 652b	Bayonet50
Prolight Opto	PDSR DimToWarm	<b>47857</b>	COB Holder Hybrid 632b	Bayonet50
Samsung	LC 010C	<b>47412</b>	COB Holder Hybrid 634a	Bayonet50
Samsung	LC 020C / 030C / 040C	<b>47422</b>	COB Holder Hybrid 633c	Bayonet50
Samsung	LC 003D / 006D	<b>47412</b>	COB Holder Hybrid 634a	Bayonet50
Samsung	LC 009D / 013D	<b>47412</b>	COB Holder Hybrid 634a	Bayonet50
Samsung	LC 016D / 019D	<b>47422</b>	COB Holder Hybrid 633c	Bayonet50
Samsung	LC 026D / 033D	<b>47422</b>	COB Holder Hybrid 633c	Bayonet50
Samsung	LC 040D / 060D / 080D	<b>47528</b>	COB Holder Hybrid 631b	Bayonet50
Seoul	SAW* 0661	<b>47413</b>	COB Holder Hybrid 634b	Bayonet50
Seoul	SAW* 1062 / 1063	<b>47413</b>	COB Holder Hybrid 634b	Bayonet50
Seoul	SAW* 1564 / 1565 / 1566	<b>47422</b>	COB Holder Hybrid 633c	Bayonet50
Seoul	SAW* 22AA / 2296	<b>47512</b>	COB Holder Hybrid 631a	Bayonet50
Seoul	SAW* 2298 / 226A	<b>47512</b>	COB Holder Hybrid 631a	Bayonet50
Signify	Fortimo SLM12xx .. 1215 G7	<b>47453</b>	COB Holder Hybrid 652a	Bayonet50
Signify	Fortimo SLM12xx .. 1619 G7	<b>47876</b>	COB Holder Hybrid 638b	Bayonet50
Signify	Fortimo SLM12xx .. 2024 G7	<b>47449</b>	COB Holder Hybrid 632a	Bayonet50
Signify	Fortimo SLM12xx .. 2828 G7	<b>47528</b>	COB Holder Hybrid 631b	Bayonet50
Signify	Fortimo SLM12xx .. 1313 G7N	<b>47412</b>	COB Holder Hybrid 634a	Bayonet50
Signify	Fortimo SLM12xx .. 1919 G7N	<b>47420</b>	COB Holder Hybrid 633a	Bayonet50
Signify	Fortimo SLM12xx .. 2828 G7N	<b>47528</b>	COB Holder Hybrid 631b	Bayonet50
Signify	Fortimo SLM13xx .. 2024 G8 UHE	<b>47449</b>	COB Holder Hybrid 632a	Bayonet50
Signify	Fortimo SLM13xx .. 2828 G8 UHE	<b>47528</b>	COB Holder Hybrid 631b	Bayonet50
Tridonic	SLE ADV8 LES 04 / 06	<b>47412</b>	COB Holder Hybrid 634a	Bayonet50
Tridonic	SLE ADV8 LES 09	<b>47412</b>	COB Holder Hybrid 634a	Bayonet50
Tridonic	SLE ADV8 LES 13	<b>47422</b>	COB Holder Hybrid 633c	Bayonet50
Tridonic	SLE ADV8 LES 15	<b>47422</b>	COB Holder Hybrid 633c	Bayonet50
Tridonic	SLE ADV8 LES 17	<b>47528</b>	COB Holder Hybrid 631b	Bayonet50
Tridonic	SLE ADV8 LES 21	<b>47528</b>	COB Holder Hybrid 631b	Bayonet50
Tridonic	SLE SNC8 LES 06	<b>47412</b>	COB Holder Hybrid 634a	Bayonet50
Tridonic	SLE SNC8 LES 09	<b>47412</b>	COB Holder Hybrid 634a	Bayonet50
Tridonic	SLE SNC8 LES 15	<b>47422</b>	COB Holder Hybrid 633c	Bayonet50
VS Lighting	DMS 102 ***W	<b>47412</b>	COB Holder Hybrid 634a	Bayonet50
VS Lighting	DMS 124 ***W	<b>47412</b>	COB Holder Hybrid 634a	Bayonet50
VS Lighting	DMS 125 / 126 / 128 ***W	<b>47420</b>	COB Holder Hybrid 633a	Bayonet50
VS Lighting	DMS 120 ***W	<b>47512</b>	COB Holder Hybrid 631a	Bayonet50

**COB HALTER HYBRID**  
**COB HOLDER HYBRID**

**630**



VS Lighting	DMS 12C / 18B ***W	<b>47512</b>	COB Holder Hybrid 631a	Bayonet50
VS Lighting	DMS 1208J	<b>47420</b>	COB Holder Hybrid 633a	Bayonet50
VS Lighting	DMS 1212J / 1812J	<b>47512</b>	COB Holder Hybrid 631a	Bayonet50
VS Lighting	VCA 042	<b>47413</b>	COB Holder Hybrid 634b	Bayonet50
VS Lighting	VCA2 122 / 123 / 124	<b>47413</b>	COB Holder Hybrid 634b	Bayonet50
VS Lighting	VCA2 126 / 128	<b>47422</b>	COB Holder Hybrid 633c	Bayonet50
VS Lighting	VCA2 1211 / 1213	<b>47528</b>	COB Holder Hybrid 631b	Bayonet50
VS Lighting	WU-M-618 DimToWarm	<b>47412</b>	COB Holder Hybrid 634a	Bayonet50
Xicato	XOB 04	<b>47413</b>	COB Holder Hybrid 634b	Bayonet50
Xicato	XOB 06 (B)	<b>47413</b>	COB Holder Hybrid 634b	Bayonet50
Xicato	XOB 09	<b>47412</b>	COB Holder Hybrid 634a	Bayonet50
Xicato	XOB 14	<b>47420</b>	COB Holder Hybrid 633a	Bayonet50
Xicato	XOB 23	<b>47512</b>	COB Holder Hybrid 631a	Bayonet50

<p>Gehäusetyp: Housing:</p>	<p><b>Bayonet50G</b></p>	<p>Größe / Size : 50 mm Höhe / Height : 4,5 mm</p>														
<p>Beispiele für passende Optiken examples of suitable optics</p>	<p><b>GAGGIONE HADAR70 / HADAR70ZOOM (Holder H10*)</b>  <b>GAGGIONE LLC66 / LLC79 / SIRIUS50 ZOOM</b>  <b>GAGGIONE VEGA50 / UFO45 / UFO67</b></p>															
<p style="text-align: center;"><u>Version 1: 633x, 634x, 637x, 638x, 641x, 652x, 660x</u></p> <div style="display: flex; justify-content: space-around; align-items: center;">   </div> <p style="text-align: center;"><u>Version 2: 631x, 632x, 639x, 663x</u></p> <p style="text-align: center;">Diese Version ist nicht umgesetzt. Bei Bedarf bitte melden Sie sich bei uns.  This version is not established. Please contact us on request.</p> <div style="text-align: right; margin-top: 20px;"> <p>Spezielle Schraube mit flachem Kopf erforderlich  Special flat head screw required</p> <p>e.g. 48279  M3 x 8mm</p>  </div>																
<table border="0"> <tr> <td><b>Bemessungsspannung</b> rated voltage</td> <td><b>Standard 80V DC</b> optional 450V DC</td> </tr> <tr> <td><b>Bemessungsstrom</b> rated current</td> <td><b>5 A</b></td> </tr> <tr> <td><b>Bemessungstemperatur</b> rated operating temperature</td> <td><b>T 120</b></td> </tr> <tr> <td><b>Befestigung</b> fixing</td> <td><b>2 Schrauben M3</b> 2 screws M3</td> </tr> <tr> <td><b>max. Drehmoment</b> max. torque</td> <td><b>0,3 Nm</b></td> </tr> <tr> <td><b>Material des Halters</b> material of the holder</td> <td><b>PBT / Mikanit</b> PBT / Mica</td> </tr> <tr> <td><b>Kontaktmaterial</b> contactmaterial</td> <td><b>CuSn</b> CuSn</td> </tr> </table>		<b>Bemessungsspannung</b> rated voltage	<b>Standard 80V DC</b> optional 450V DC	<b>Bemessungsstrom</b> rated current	<b>5 A</b>	<b>Bemessungstemperatur</b> rated operating temperature	<b>T 120</b>	<b>Befestigung</b> fixing	<b>2 Schrauben M3</b> 2 screws M3	<b>max. Drehmoment</b> max. torque	<b>0,3 Nm</b>	<b>Material des Halters</b> material of the holder	<b>PBT / Mikanit</b> PBT / Mica	<b>Kontaktmaterial</b> contactmaterial	<b>CuSn</b> CuSn	<p style="text-align: center;"><b>Zulässige COB Abmessungen</b> Permissible COB dimensions</p> <div style="display: flex; align-items: center;">  <div style="margin-left: 10px;"> <p><b>siehe Einzeldatenblätter im Online Katalog</b> see data sheets at our web catalogue</p> </div> </div> <hr/> <p style="text-align: center;"><b>Zertifikate / certificates</b></p> <div style="display: flex; justify-content: space-between; align-items: center;"> <div style="text-align: center;">  <p>Ausweis-Nr.</p> </div> <div style="text-align: center;">  <p>File E4729</p> </div> </div>
<b>Bemessungsspannung</b> rated voltage	<b>Standard 80V DC</b> optional 450V DC															
<b>Bemessungsstrom</b> rated current	<b>5 A</b>															
<b>Bemessungstemperatur</b> rated operating temperature	<b>T 120</b>															
<b>Befestigung</b> fixing	<b>2 Schrauben M3</b> 2 screws M3															
<b>max. Drehmoment</b> max. torque	<b>0,3 Nm</b>															
<b>Material des Halters</b> material of the holder	<b>PBT / Mikanit</b> PBT / Mica															
<b>Kontaktmaterial</b> contactmaterial	<b>CuSn</b> CuSn															
<p style="text-align: center;">Weitere technische Daten und Montagehinweise sind im <a href="#">Technical Guide COB Halterserie 630</a> enthalten.  Further technical details and mounting instructions are part of the <a href="#">Technical Guide COB holder series 630</a>.</p>																

Teilumhüllter Halter für folgende COBs / unenclosed holder for the following COBs:			
Hersteller supplier	COB Typ COB Type	Teile-Nr. part no.	Haltervariante variant of holder
Bridgelux	V3 HD / V4 HD Gen 7,8	<b>48367</b>	COB Holder Hybrid 660a Bayonet50G
Bridgelux	V6 HD Gen 7,8	<b>48346</b>	COB Holder Hybrid 634c Bayonet50G
Bridgelux	V9 HD / V11 HD Gen 7,8	<b>48344</b>	COB Holder Hybrid 633d Bayonet50G
Bridgelux	V6 Gen 8,9 (just 2 pads!)	<b>48367</b>	COB Holder Hybrid 660a Bayonet50G
Bridgelux	V8 Gen 7,8,9 (4 pads)	<b>48367</b>	COB Holder Hybrid 660a Bayonet50G
Bridgelux	V10 Gen 7,8,9	<b>48345</b>	COB Holder Hybrid 634b Bayonet50G
Bridgelux	V13 Gen 7,8,9	<b>48343</b>	COB Holder Hybrid 633c Bayonet50G
Bridgelux	V18 Gen 7,8,9	<b>on request</b>	Werkzeug fehlt / Tooling required
Bridgelux	V22 Gen 7,8,9	<b>on request</b>	Werkzeug fehlt / Tooling required
Bridgelux	Vesta DTW 6/9mm Gen 1,2	<b>48355</b>	COB Holder Hybrid 652b Bayonet50G
Bridgelux	Vesta DTW 13/15mm Gen 1,2	<b>on request</b>	Werkzeug fehlt / Tooling required
Bridgelux	Vesta DTW 18mm Gen 1	<b>on request</b>	Werkzeug fehlt / Tooling required
Bridgelux	Vesta Tunable 9mm Gen 2	<b>on request</b>	Werkzeug fehlt / Tooling required
Bridgelux	Vesta Tunable 13mm Gen 2	<b>on request</b>	Werkzeug fehlt / Tooling required
Citizen	CLU 028 / 02J / 02Q	<b>48310</b>	COB Holder Hybrid 634a Bayonet50G
Citizen	CLU 038 / 03H / 03J / 03Q	<b>48311</b>	COB Holder Hybrid 633a Bayonet50G
Citizen	CLU 048 / 04H / 04J / 04Q	<b>on request</b>	Werkzeug fehlt / Tooling required
Citizen	CLU 7L3 / 7S3	<b>on request</b>	Werkzeug fehlt / Tooling required
Citizen	CLU 702 / 703 / 7A2 / 7A3 / 7B2	<b>48310</b>	COB Holder Hybrid 634a Bayonet50G
Citizen	CLU 712 / 713	<b>48343</b>	COB Holder Hybrid 633c Bayonet50G
Citizen	CLU 723	<b>48343</b>	COB Holder Hybrid 633c Bayonet50G
Citizen	CLU 733	<b>on request</b>	Werkzeug fehlt / Tooling required
CREE	CHA 0304 / 0410 / 0612	<b>48310</b>	COB Holder Hybrid 634a Bayonet50G
CREE	CHA 0825	<b>48311</b>	COB Holder Hybrid 633a Bayonet50G
CREE	CMA 1303 / 1306	<b>48346</b>	COB Holder Hybrid 634c Bayonet50G
CREE	CMA 1516	<b>48352</b>	COB Holder Hybrid 641a Bayonet50G
CREE	CMA 1825 / 1840	<b>48348</b>	COB Holder Hybrid 637a Bayonet50G
CREE	CMA 2550	<b>on request</b>	Werkzeug fehlt / Tooling required
CREE	CMB 1304 / 1306	<b>48346</b>	COB Holder Hybrid 634c Bayonet50G
CREE	CMB 1507 / 1510 / 1516	<b>48352</b>	COB Holder Hybrid 641a Bayonet50G
CREE	CMB 1818 / 1825	<b>48348</b>	COB Holder Hybrid 637a Bayonet50G
CREE	CMB 1840	<b>48349</b>	COB Holder Hybrid 637b Bayonet50G
CREE	CMB 2550	<b>on request</b>	Werkzeug fehlt / Tooling required
CREE	CMT 1407 / 1412 / 1420	<b>48310</b>	COB Holder Hybrid 634a Bayonet50G
CREE	CMT 1922 / 1925 / 1930 / 1945	<b>48343</b>	COB Holder Hybrid 633c Bayonet50G
CREE	CMT 2850 / 2870 / 2890	<b>on request</b>	Werkzeug fehlt / Tooling required
CREE	CMU 1003 / 1006 / 1010 / 1013	<b>48310</b>	COB Holder Hybrid 634a Bayonet50G
CREE	CMU 1516 / 1519 / 1526 / 1532	<b>48311</b>	COB Holder Hybrid 633a Bayonet50G
CREE	CMU 2236 / 2239 / 2258 / 2287	<b>on request</b>	Werkzeug fehlt / Tooling required
CREE	CXB 1304 / 1310	<b>48346</b>	COB Holder Hybrid 634c Bayonet50G

CREE	CXB 1507 / 1512 / 1520	<b>48352</b>	COB Holder Hybrid 641a Bayonet50G
CREE	CXB 1816 / 1820	<b>48348</b>	COB Holder Hybrid 637a Bayonet50G
CREE	CXB 1830	<b>48349</b>	COB Holder Hybrid 637b Bayonet50G
CREE	CXB 2530 / 2540	<b>on request</b>	Werkzeug fehlt / Tooling required
Edison	2PHE 03 / 06 / 09 / 13	<b>48310</b>	COB Holder Hybrid 634a Bayonet50G
Edison	2PHE 15 / 18 / 24 / 30	<b>48311</b>	COB Holder Hybrid 633a Bayonet50G
Edison	2PHE 55 / 60 / 83	<b>on request</b>	Werkzeug fehlt / Tooling required
Lextar	PB 06 / 09 / 13	<b>48310</b>	COB Holder Hybrid 634a Bayonet50G
Lextar	PB 16 / 19 / 26	<b>48311</b>	COB Holder Hybrid 633a Bayonet50G
Lextar	PB 38 / 54	<b>on request</b>	Werkzeug fehlt / Tooling required
Lumileds	Luxeon 1202s / 1202HD	<b>48354</b>	COB Holder Hybrid 652a Bayonet50G
Lumileds	Luxeon 1202 / 1203 / 1204HD	<b>48351</b>	COB Holder Hybrid 638b Bayonet50G
Lumileds	Luxeon 1205HD	<b>48351</b>	COB Holder Hybrid 638b Bayonet50G
Lumileds	Luxeon 1204 / 1205	<b>on request</b>	Werkzeug fehlt / Tooling required
Lumileds	Luxeon 1208 / 1210	<b>on request</b>	Werkzeug fehlt / Tooling required
Lumileds	Luxeon 1211	<b>on request</b>	Werkzeug fehlt / Tooling required
Lumileds	Luxeon 1213 / 1216 / 1812 / 1816	<b>on request</b>	Werkzeug fehlt / Tooling required
Lumileds	CS COB L02 / L04	<b>48310</b>	COB Holder Hybrid 634a Bayonet50G
Lumileds	CS COB L06 / L08 / L10	<b>48311</b>	COB Holder Hybrid 633a Bayonet50G
Lumileds	CS COB L11 / L13 / L16	<b>on request</b>	Werkzeug fehlt / Tooling required
Lumileds	CS COB R12 / R18	<b>on request</b>	Werkzeug fehlt / Tooling required
Lumileds	CX Plus HD S01H4, S0xH6	<b>48346</b>	COB Holder Hybrid 634c Bayonet50G
Lumileds	CX Plus HD S04H9	<b>48345</b>	COB Holder Hybrid 634b Bayonet50G
Lumileds	CX Plus S01Fx / S02Fx	<b>48346</b>	COB Holder Hybrid 634c Bayonet50G
Lumileds	CX Plus M02Fx / M03Fx	<b>48352</b>	COB Holder Hybrid 641a Bayonet50G
Lumileds	CX Plus L04Fx / L05Fx / L08Fx	<b>48348</b>	COB Holder Hybrid 637a Bayonet50G
Luminus	CXM-3-xC	<b>48310</b>	COB Holder Hybrid 634a Bayonet50G
Luminus	CHM-4-BH / CXM-4-xC	<b>48310</b>	COB Holder Hybrid 634a Bayonet50G
Luminus	CHM-6-BH / CXM-6-xC	<b>48310</b>	COB Holder Hybrid 634a Bayonet50G
Luminus	CIM/CLM/CXM-9-xC	<b>48310</b>	COB Holder Hybrid 634a Bayonet50G
Luminus	CHM-9-BH	<b>48311</b>	COB Holder Hybrid 633a Bayonet50G
Luminus	CXM-11-xC	<b>48311</b>	COB Holder Hybrid 633a Bayonet50G
Luminus	CGM/CIM/CLM/CXM-14-xC	<b>48311</b>	COB Holder Hybrid 633a Bayonet50G
Luminus	CXM-18 Gen6	<b>on request</b>	Werkzeug fehlt / Tooling required
Luminus	CGM/CIM/CLM/CXM-22-xC	<b>on request</b>	Werkzeug fehlt / Tooling required
Luminus	CDM-6 / CDM-9Gen1 DtW	<b>48355</b>	COB Holder Hybrid 652b Bayonet50G
Luminus	CDM-9 Gen2 DtW	<b>on request</b>	Werkzeug fehlt / Tooling required
Luminus	CDM-14/CDM-18 DtW	<b>on request</b>	Werkzeug fehlt / Tooling required
Luxtech	COB-WD-10-1512	<b>48356</b>	COB Holder Hybrid 652c Bayonet50G
Luxtech	COB-WD-17-2420	<b>on request</b>	Werkzeug fehlt / Tooling required
Nichia	NV..S007Z / NF..T012B	<b>48354</b>	COB Holder Hybrid 652a Bayonet50G
Nichia	NF..S024B / NT..S024B	<b>48354</b>	COB Holder Hybrid 652a Bayonet50G
Nichia	NJ..S024Z	<b>48354</b>	COB Holder Hybrid 652a Bayonet50G



Nichia	NV..L016Z / NV..L024Z	<b>48350</b>	COB Holder Hybrid 638a Bayonet50G
Nichia	NF..L036B / NF..L048B	<b>48350</b>	COB Holder Hybrid 638a Bayonet50G
Nichia	NF..L060B	<b>48350</b>	COB Holder Hybrid 638a Bayonet50G
Nichia	NV..J048Z / NF..J108B	<b>on request</b>	Werkzeug fehlt / Tooling required
Nichia	NF..J130B	<b>on request</b>	Werkzeug fehlt / Tooling required
Prolight Opto	PASB	<b>48310</b>	COB Holder Hybrid 634a Bayonet50G
Prolight Opto	PASQ/PAPQ DimToWarm	<b>48310</b>	COB Holder Hybrid 634a Bayonet50G
Prolight Opto	PDSQ DimToWarm	<b>48355</b>	COB Holder Hybrid 652b Bayonet50G
Prolight Opto	PDSR DimToWarm	<b>on request</b>	Werkzeug fehlt / Tooling required
Samsung	LC 010C	<b>48310</b>	COB Holder Hybrid 634a Bayonet50G
Samsung	LC 020C / 030C / 040C	<b>48343</b>	COB Holder Hybrid 633c Bayonet50G
Samsung	LC 003D / 006D	<b>48310</b>	COB Holder Hybrid 634a Bayonet50G
Samsung	LC 009D / 013D	<b>48310</b>	COB Holder Hybrid 634a Bayonet50G
Samsung	LC 016D / 019D	<b>48343</b>	COB Holder Hybrid 633c Bayonet50G
Samsung	LC 026D / 033D	<b>48343</b>	COB Holder Hybrid 633c Bayonet50G
Samsung	LC 040D / 060D / 080D	<b>on request</b>	Werkzeug fehlt / Tooling required
Seoul	SAW* 0661	<b>48345</b>	COB Holder Hybrid 634b Bayonet50G
Seoul	SAW* 1062 / 1063	<b>48345</b>	COB Holder Hybrid 634b Bayonet50G
Seoul	SAW* 1564 / 1565 / 1566	<b>48343</b>	COB Holder Hybrid 633c Bayonet50G
Seoul	SAW* 22AA / 2296	<b>on request</b>	Werkzeug fehlt / Tooling required
Seoul	SAW* 2298 / 226A	<b>on request</b>	Werkzeug fehlt / Tooling required
Signify	Fortimo SLM12xx .. 1215 G7	<b>48354</b>	COB Holder Hybrid 652a Bayonet50G
Signify	Fortimo SLM12xx .. 1619 G7	<b>48351</b>	COB Holder Hybrid 638b Bayonet50G
Signify	Fortimo SLM12xx .. 2024 G7	<b>on request</b>	Werkzeug fehlt / Tooling required
Signify	Fortimo SLM12xx .. 2828 G7	<b>on request</b>	Werkzeug fehlt / Tooling required
Signify	Fortimo SLM12xx .. 1313 G7N	<b>48310</b>	COB Holder Hybrid 634a Bayonet50G
Signify	Fortimo SLM12xx .. 1919 G7N	<b>48311</b>	COB Holder Hybrid 633a Bayonet50G
Signify	Fortimo SLM12xx .. 2828 G7N	<b>on request</b>	Werkzeug fehlt / Tooling required
Signify	Fortimo SLM13xx .. 2024 G8 UHE	<b>on request</b>	Werkzeug fehlt / Tooling required
Signify	Fortimo SLM13xx .. 2828 G8 UHE	<b>on request</b>	Werkzeug fehlt / Tooling required
Tridonic	SLE ADV8 LES 04 / 06	<b>48310</b>	COB Holder Hybrid 634a Bayonet50G
Tridonic	SLE ADV8 LES 09	<b>48310</b>	COB Holder Hybrid 634a Bayonet50G
Tridonic	SLE ADV8 LES 13	<b>48343</b>	COB Holder Hybrid 633c Bayonet50G
Tridonic	SLE ADV8 LES 15	<b>48343</b>	COB Holder Hybrid 633c Bayonet50G
Tridonic	SLE ADV8 LES 17	<b>on request</b>	Werkzeug fehlt / Tooling required
Tridonic	SLE ADV8 LES 21	<b>on request</b>	Werkzeug fehlt / Tooling required
Tridonic	SLE SNC8 LES 06	<b>48310</b>	COB Holder Hybrid 634a Bayonet50G
Tridonic	SLE SNC8 LES 09	<b>48310</b>	COB Holder Hybrid 634a Bayonet50G
Tridonic	SLE SNC8 LES 15	<b>48343</b>	COB Holder Hybrid 633c Bayonet50G
VS Lighting	DMS 102 ***W	<b>48310</b>	COB Holder Hybrid 634a Bayonet50G
VS Lighting	DMS 124 ***W	<b>48310</b>	COB Holder Hybrid 634a Bayonet50G
VS Lighting	DMS 125 / 126 / 128 ***W	<b>48311</b>	COB Holder Hybrid 633a Bayonet50G
VS Lighting	DMS 120 ***W	<b>on request</b>	Werkzeug fehlt / Tooling required

VS Lighting	DMS 12C / 18B ***W	<b>on request</b>	Werkzeug fehlt / Tooling required
VS Lighting	DMS 1208J	<b>48311</b>	COB Holder Hybrid 633a Bayonet50G
VS Lighting	DMS 1212J / 1812J	<b>on request</b>	Werkzeug fehlt / Tooling required
VS Lighting	VCA 042	<b>48345</b>	COB Holder Hybrid 634b Bayonet50G
VS Lighting	VCA2 122 / 123 / 124	<b>48345</b>	COB Holder Hybrid 634b Bayonet50G
VS Lighting	VCA2 126 / 128	<b>48343</b>	COB Holder Hybrid 633c Bayonet50G
VS Lighting	VCA2 1211 / 1213	<b>on request</b>	Werkzeug fehlt / Tooling required
VS Lighting	WU-M-618 DimToWarm	<b>48310</b>	COB Holder Hybrid 634a Bayonet50G
Xicato	XOB 04	<b>48345</b>	COB Holder Hybrid 634b Bayonet50G
Xicato	XOB 06 (B)	<b>48345</b>	COB Holder Hybrid 634b Bayonet50G
Xicato	XOB 09	<b>48310</b>	COB Holder Hybrid 634a Bayonet50G
Xicato	XOB 14	<b>48311</b>	COB Holder Hybrid 633a Bayonet50G
Xicato	XOB 23	<b>on request</b>	Werkzeug fehlt / Tooling required

**GAGGIONE**

Reflektor Ø45 AF **LLR01N**

**Gaggione Reflektor**

Gaggione reflector

[LLR01N11AE1](#)

**Hersteller Webseite**

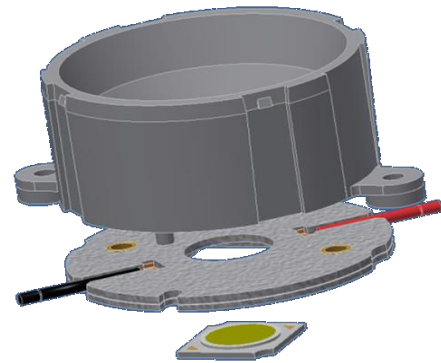
Manufacturer website

[www.optic-gaggione.com](http://www.optic-gaggione.com)

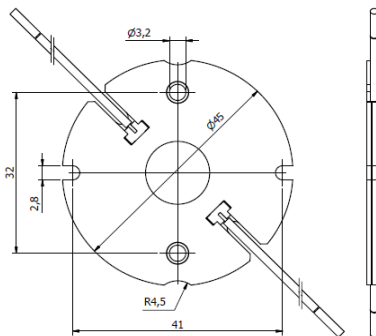
**LED Halter B+W**

LED Holder B+W

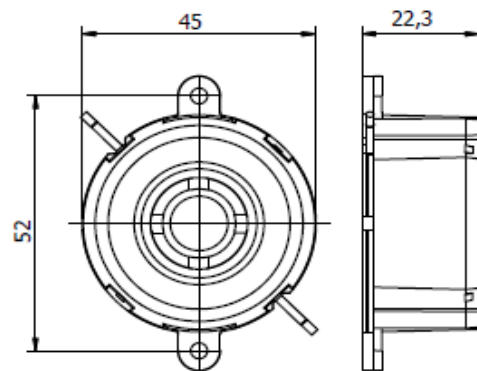
4xx / Typ G1



4xx Typ G1



LLR01N11AE1



**Mögliche Halter / COB Kombinationen / Holder / COB combinations** **Gaggione LLR01N**

COB Hersteller COB Supplier	COB Typ COB Type	Halter Holder	Reflektor Reflector
Bridgelux	V3 HD / V4 HD Gen 7,8	460 Typ G1	LLR01N11AE1
Bridgelux	V6 HD Gen 7,8	464 Typ G1	LLR01N11AE1
Bridgelux	V9 HD / V11 HD Gen 7,8	496 Typ G1	LLR01N11AE1
Bridgelux	V6 Gen 8,9 (just 2 pads!)	460 Typ G1	LLR01N11AE1
Bridgelux	V8 Gen 7,8,9 (4 pads)	460 Typ G1	LLR01N11AE1
Bridgelux	V10 Gen 7,8,9	486 Typ G1	LLR01N11AE1
Bridgelux	Vesta DTW 6/9mm Gen 1,2	490 Typ G1	LLR01N11AE1
Bridgelux	Vesta Tunable 6mm Gen 2	504 Typ G1	LLR01N11AE1
Bridgelux	Vesta Tunable 9mm Gen 2	489 Typ G1	LLR01N11AE1
Citizen	CLU 028 / 02J / 02Q	434 Typ G1	LLR01N11AE1
Citizen	CLU 7L3 / 7S3	467 Typ G1	LLR01N11AE1
Citizen	CLU 7R3	485 Typ G1	LLR01N11AE1

**Mögliche Halter / COB Kombinationen / Holder / COB combinations Gaggione LLR01N**

COB Hersteller COB Supplier	COB Typ COB Type	Halter Holder	Reflektor Reflector
Citizen	CLU 702 / 703 / 7A2 / 7A3 / 7B2	434 Typ G1	LLR01N11AE1
Citizen	CLU 712 / 713	477 Typ G1	LLR01N11AE1
Citizen	CLU 723	477 Typ G1	LLR01N11AE1
CREE	CHA 0304 / 0410 / 0612	434 Typ G1	LLR01N11AE1
CREE	CHA 0825	433 Typ G1	LLR01N11AE1
CREE	CMA 1303 / 1306	448 Typ G1	LLR01N11AE1
CREE	CMA 1516	441 Typ G1	LLR01N11AE1
CREE	CMB 1304 / 1306	448 Typ G1	LLR01N11AE1
CREE	CMB 1507 / 1510 / 1516	441 Typ G1	LLR01N11AE1
CREE	CMB 1818 / 1825	437 Typ G1	LLR01N11AE1
CREE	CMT 1407 / 1412 / 1420	434 Typ G1	LLR01N11AE1
CREE	CMU 1003 / 1006 / 1010 / 1013	434 Typ G1	LLR01N11AE1
CREE	CXB 1304 / 1310	448 Typ G1	LLR01N11AE1
CREE	CXB 1507 / 1512 / 1520	441 Typ G1	LLR01N11AE1
CREE	CXB 1816 / 1820	437 Typ G1	LLR01N11AE1
Edison	2PHE 03 / 06 / 09 / 13	434 Typ G1	LLR01N11AE1
Lextar	PB 06 / 09 / 13	434 Typ G1	LLR01N11AE1
Lumileds	Luxeon 1202s / 1202HD	452 Typ G1	LLR01N11AE1
Lumileds	Luxeon 1202 / 1203 / 1204HD	480 Typ G1	LLR01N11AE1
Lumileds	Luxeon 1205HD	480 Typ G1	LLR01N11AE1
Lumileds	Luxeon 1204 / 1205	432 Typ G1	LLR01N11AE1
Lumileds	CS COB L02 / L04	434 Typ G1	LLR01N11AE1
Lumileds	CX Plus HD S01H4, S0xH6	448 Typ G1	LLR01N11AE1
Lumileds	CX Plus HD S04H9	4xx Typ G1	LLR01N11AE1
Lumileds	CX Plus S01Fx / S02Fx	448 Typ G1	LLR01N11AE1
Lumileds	CX Plus M02Fx / M03Fx	441 Typ G1	LLR01N11AE1
Luminus	CXM-3-xC	434 Typ G1	LLR01N11AE1
Luminus	CHM-4-BH / CXM-4-xC	434 Typ G1	LLR01N11AE1
Luminus	CHM-6-BH / CXM-6-xC	434 Typ G1	LLR01N11AE1
Luminus	CIM/CLM/CXM-9-xC	434 Typ G1	LLR01N11AE1
Luminus	CLM/CXM-9-xA	461 Typ G1	LLR01N11AE1
Luminus	CHM-9-BH	433 Typ G1	LLR01N11AE1

**Mögliche Halter / COB Kombinationen / Holder / COB combinations Gaggione LLR01N**

COB Hersteller COB Supplier	COB Typ COB Type	Halter Holder	Reflektor Reflector
Luminus	CXM-11-xC	433 Typ G1	LLR01N11AE1
Luminus	CDM-6 / CDM-9Gen1 DtW	490 Typ G1	LLR01N11AE1
Luminus	CDM-9 Gen2 DtW	491 Typ G1	LLR01N11AE1
Luminus	CTM-6 / CTM-9 TW	495 Typ G1	LLR01N11AE1
Luxtech	COB-WD-10-1512	479 Typ G1	LLR01N11AE1
Nichia	NV..S007Z / NF..T012B	452 Typ G1	LLR01N11AE1
Nichia	NF..S024B / NT..S024B	452 Typ G1	LLR01N11AE1
Nichia	NJ..S024Z	452 Typ G1	LLR01N11AE1
Nichia	NV..L016Z / NV..L024Z	438 Typ G1	LLR01N11AE1
Nichia	NF..L036B / NF..L048B	438 Typ G1	LLR01N11AE1
Nichia	NF..L060B	438 Typ G1	LLR01N11AE1
Nichia	NJNWS012Z Tunable	495 Typ G1 HV	LLR01N11AE1
Nichia	NJCWL024Z Tunable	497 Typ G1 HV	LLR01N11AE1
Nichia	NVCWJ024Z Tunable	498 Typ G1 HV	LLR01N11AE1
Prolight Opto	PASB	434 Typ G1	LLR01N11AE1
Prolight Opto	PASQ/PAPQ DimToWarm	434 Typ G1	LLR01N11AE1
Prolight Opto	PDSQ DimToWarm	490 Typ G1	LLR01N11AE1
Samsung	LC 010C	434 Typ G1	LLR01N11AE1
Samsung	LC 020C / 030C / 040C	477 Typ G1	LLR01N11AE1
Samsung	LC 003D / 006D	434 Typ G1	LLR01N11AE1
Samsung	LC 009D / 013D	434 Typ G1	LLR01N11AE1
Samsung	LC010T Tunable	501 Typ G1	LLR01N11AE1
Samsung	LC020T Tunable	501 Typ G1	LLR01N11AE1
Seoul	SAW* 0661	434 Typ G1	LLR01N11AE1
Seoul	SAW* 1062 / 1063	434 Typ G1	LLR01N11AE1
Signify	Fortimo SLM12xx .. 1215 G7	452 Typ G1	LLR01N11AE1
Signify	Fortimo SLM12xx .. 1619 G7	480 Typ G1	LLR01N11AE1
Signify	Fortimo SLM12xx .. 1313 G7N	434 Typ G1	LLR01N11AE1
Signify	Fortimo L06A 1313 G7N Tunable	509 Typ G1	LLR01N11AE1
Signify	Fortimo L09A 1919 G7N Tunable	501 Typ G1	LLR01N11AE1

**Mögliche Halter / COB Kombinationen / Holder / COB combinations** **Gaggione LLR01N**

<b>COB Hersteller COB Supplier</b>	<b>COB Typ COB Type</b>	<b>Halter Holder</b>	<b>Reflektor Reflector</b>
Tridonic	SLE ADV8 LES 04 / 06	434 Typ G1	LLR01N11AE1
Tridonic	SLE ADV8 LES 09	434 Typ G1	LLR01N11AE1
Tridonic	SLE ADV8 LES 13	433 Typ G1	LLR01N11AE1
Tridonic	SLE SNC8 LES 06	434 Typ G1	LLR01N11AE1
Tridonic	SLE SNC8 LES 09	434 Typ G1	LLR01N11AE1
VS Lighting	DMS 102 ***W	434 Typ G1	LLR01N11AE1
VS Lighting	DMS 124 ***W	434 Typ G1	LLR01N11AE1
VS Lighting	VCA 042	486 Typ G1	LLR01N11AE1
VS Lighting	VCA2 122 / 123 / 124	486 Typ G1	LLR01N11AE1
VS Lighting	WU-M-618 DimToWarm	434 Typ G1	LLR01N11AE1
Xicato	XOB 04	486 Typ G1	LLR01N11AE1
Xicato	XOB 06 (B)	486 Typ G1	LLR01N11AE1
Xicato	XOB 09	434 Typ G1	LLR01N11AE1

**GAGGIONE**

Reflektor Ø70 AF **LLR05N**

**Gaggione Reflektor**

Gaggione reflector

[LLR05N11AC1](#)

**Hersteller Webseite**

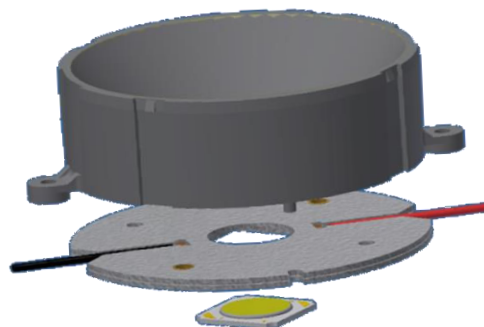
Manufacturer website

[www.optic-gaggione.com](http://www.optic-gaggione.com)

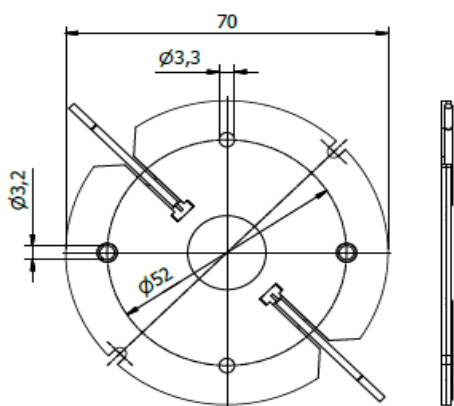
**LED Halter B+W**

LED Holder B+W

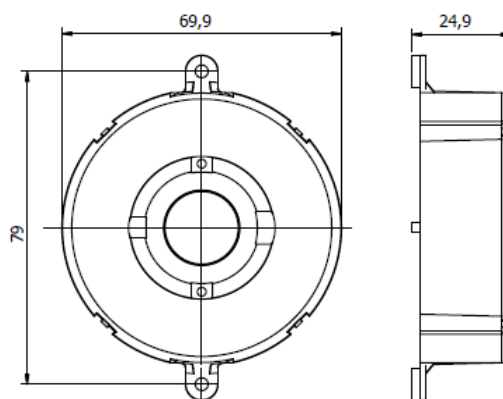
4xx / Typ G2



4xx Typ G2



LLR05N11AC1



**Mögliche Halter / COB Kombinationen / Holder / COB combinations** **Gaggione LLR05N**

COB Hersteller COB Supplier	COB Typ COB Type	Halter Holder	Reflektor Reflector
Bridgelux	V3 HD / V4 HD Gen 7,8	460 Typ G2	LLR05N11AC1
Bridgelux	V6 HD Gen 7,8	464 Typ G2	LLR05N11AC1
Bridgelux	V9 HD / V11 HD Gen 7,8	496 Typ G2	LLR05N11AC1
Bridgelux	V6 Gen 8,9 (just 2 pads!)	460 Typ G2	LLR05N11AC1
Bridgelux	V8 Gen 7,8,9 (4 pads)	460 Typ G2	LLR05N11AC1
Bridgelux	V10 Gen 7,8,9	486 Typ G2	LLR05N11AC1
Bridgelux	V13 Gen 7,8,9	477 Typ G2	LLR05N11AC1
Bridgelux	V15 Gen 7,8,9	456 Typ G2	LLR05N11AC1
Bridgelux	V18 Gen 7,8,9	462 Typ G2	LLR05N11AC1
Bridgelux	V22 Gen 7,8,9	431 Typ G2	LLR05N11AC1
Bridgelux	Vesta DTW 6/9mm Gen 1,2	490 Typ G2	LLR05N11AC1
Bridgelux	Vesta DTW 13/15mm Gen 1,2	491 Typ G2	LLR05N11AC1
Bridgelux	Vesta DTW 18mm Gen 1	505 Typ G2	LLR05N11AC1

**Mögliche Halter / COB Kombinationen / Holder / COB combinations Gaggione LLR05N**

COB Hersteller COB Supplier	COB Typ COB Type	Halter Holder	Reflektor Reflector
Bridgelux	Vesta Tunable 6mm Gen 2	504 Typ G2	LLR05N11AC1
Bridgelux	Vesta Tunable 9mm Gen 2	489 Typ G2	LLR05N11AC1
Bridgelux	Vesta Tunable 13mm Gen 2	492 Typ G2	LLR05N11AC1
Bridgelux	Vesta Tunable 15mm Gen 2	482 Typ G2	LLR05N11AC1
Bridgelux	Vesta Tunable 18mm Gen 2	483 Typ G2	LLR05N11AC1
Bridgelux	Vesta Tunable 22mm Gen 2	494 Typ G2	LLR05N11AC1
Citizen	CLU 028 / 02J / 02Q	434 Typ G2	LLR05N11AC1
Citizen	CLU 038 / 03H / 03J / 03Q	433 Typ G2	LLR05N11AC1
Citizen	CLU 048 / 04H / 04J / 04Q	431 Typ G2	LLR05N11AC1
Citizen	CLU 7R3	485 Typ G2	LLR05N11AC1
Citizen	CLU 702 / 703 / 7A2 / 7A3 / 7B2	434 Typ G2	LLR05N11AC1
Citizen	CLU 712 / 713	477 Typ G2	LLR05N11AC1
Citizen	CLU 723	477 Typ G2	LLR05N11AC1
Citizen	CLU 733	471 Typ G2	LLR05N11AC1
Citizen	LCN-C01B2 / C02B2 Tunable	481 Typ G2	LLR05N11AC1
Citizen	LCN-C04B2 / C05B2 Tunable	481 Typ G2	LLR05N11AC1
CREE	CHA 0304 / 0410 / 0612	434 Typ G2	LLR05N11AC1
CREE	CHA 0825	433 Typ G2	LLR05N11AC1
CREE	CMA 1303 / 1306	448 Typ G2	LLR05N11AC1
CREE	CMA 1516	441 Typ G2	LLR05N11AC1
CREE	CMA 1825 / 1840	437 Typ G2	LLR05N11AC1
CREE	CMA 2550	439 Typ G2	LLR05N11AC1
CREE	CMA 3090	447 Typ G2	LLR05N11AC1
CREE	CMB 1304 / 1306	448 Typ G2	LLR05N11AC1
CREE	CMB 1507 / 1510 / 1516	441 Typ G2	LLR05N11AC1
CREE	CMB 1818 / 1825	437 Typ G2	LLR05N11AC1
CREE	CMB 1840	457 Typ G2	LLR05N11AC1
CREE	CMB 2550	439 Typ G2	LLR05N11AC1
CREE	CMB 3090	447 Typ G2	LLR05N11AC1
CREE	CMT 1407 / 1412 / 1420	434 Typ G2	LLR05N11AC1
CREE	CMT 1922 / 1925 / 1930 / 1945	477 Typ G2	LLR05N11AC1
CREE	CMT 2850 / 2870 / 2890	471 Typ G2	LLR05N11AC1
CREE	CMU 1003 / 1006 / 1010 / 1013	434 Typ G2	LLR05N11AC1
CREE	CMU 1516 / 1519 / 1526 / 1532	433 Typ G2	LLR05N11AC1
CREE	CMU 2236 / 2239 / 2258 / 2287	471 Typ G2	LLR05N11AC1



**Mögliche Halter / COB Kombinationen / Holder / COB combinations Gaggione LLR05N**

COB Hersteller COB Supplier	COB Typ COB Type	Halter Holder	Reflektor Reflector
CREE	CXB 1304 / 1310	448 Typ G2	LLR05N11AC1
CREE	CXB 1507 / 1512 / 1520	441 Typ G2	LLR05N11AC1
CREE	CXB 1816 / 1820	437 Typ G2	LLR05N11AC1
CREE	CXB 1830	457 Typ G2	LLR05N11AC1
CREE	CXB 2530 / 2540	439 Typ G2	LLR05N11AC1
CREE	CXB 3050 / 3070	447 Typ G2	LLR05N11AC1
Edison	2PHE 03 / 06 / 09 / 13	434 Typ G2	LLR05N11AC1
Edison	2PHE 15 / 18 / 24 / 30	433 Typ G2	LLR05N11AC1
Edison	2PHE 55 / 60 / 83	431 Typ G2	LLR05N11AC1
Lextar	PB 06 / 09 / 13	434 Typ G2	LLR05N11AC1
Lextar	PB 16 / 19 / 26	433 Typ G2	LLR05N11AC1
Lextar	PB 38 / 54	431 Typ G2	LLR05N11AC1
Lumileds	Luxeon 1202s / 1202HD	452 Typ G2	LLR05N11AC1
Lumileds	Luxeon 1202 / 1203 / 1204HD	480 Typ G2	LLR05N11AC1
Lumileds	Luxeon 1205HD	480 Typ G2	LLR05N11AC1
Lumileds	Luxeon 1204 / 1205	432 Typ G2	LLR05N11AC1
Lumileds	Luxeon 1208 / 1210	432 Typ G2	LLR05N11AC1
Lumileds	Luxeon 1211	431 Typ G2	LLR05N11AC1
Lumileds	Luxeon 1213 / 1216 / 1812 / 1816	431 Typ G2	LLR05N11AC1
Lumileds	CS COB L02 / L04	434 Typ G2	LLR05N11AC1
Lumileds	CS COB L06 / L08 / L10	433 Typ G2	LLR05N11AC1
Lumileds	CS COB L11 / L13 / L16	431 Typ G2	LLR05N11AC1
Lumileds	CS COB R12 / R18	431 Typ G2	LLR05N11AC1
Lumileds	CX Plus HD S01H4, S0xH6	448 Typ G2	LLR05N11AC1
Lumileds	CX Plus HD S04H9	4xx Typ G2	LLR05N11AC1
Lumileds	CX Plus S01Fx / S02Fx	448 Typ G2	LLR05N11AC1
Lumileds	CX Plus M02Fx / M03Fx	441 Typ G2	LLR05N11AC1
Lumileds	CX Plus L04Fx / L05Fx / L08Fx	437 Typ G2	LLR05N11AC1
Luminus	CXM-3-xC	434 Typ G2	LLR05N11AC1
Luminus	CHM-4-BH / CXM-4-xC	434 Typ G2	LLR05N11AC1
Luminus	CHM-6-BH / CXM-6-xC	434 Typ G2	LLR05N11AC1
Luminus	CIM/CLM/CXM-9-xC	434 Typ G2	LLR05N11AC1
Luminus	CLM/CXM-9-xA	461 Typ G2	LLR05N11AC1

**Mögliche Halter / COB Kombinationen / Holder / COB combinations Gaggione LLR05N**

COB Hersteller COB Supplier	COB Typ COB Type	Halter Holder	Reflektor Reflector
Luminus	CHM-9-BH	433 Typ G2	LLR05N11AC1
Luminus	CXM-11-xC	433 Typ G2	LLR05N11AC1
Luminus	CGM/CIM/CLM/CXM-14-xC	433 Typ G2	LLR05N11AC1
Luminus	CVM/CXM-18	453 Typ G2	LLR05N11AC1
Luminus	CXM-18 Gen6	431 Typ G2	LLR05N11AC1
Luminus	CGM/CIM/CLM/CXM-22-xC	431 Typ G2	LLR05N11AC1
Luminus	CDM-6 / CDM-9Gen1 DtW	490 Typ G2	LLR05N11AC1
Luminus	CDM-9 Gen2 DtW	491 Typ G2	LLR05N11AC1
Luminus	CDM-14/CDM-18 DtW	491 Typ G2	LLR05N11AC1
Luminus	CTM-6 / CTM-9 TW	495 Typ G2	LLR05N11AC1
Luminus	CTM-14 TW	442 Typ G2	LLR05N11AC1
Luminus	CTM-14 RGBW	500 Typ G2	LLR05N11AC1
Luminus	CTM-18 Gen1 TW	442 Typ G2	LLR05N11AC1
Luminus	CTM-18 Gen2 TW	483 Typ G2	LLR05N11AC1
Luminus	CTM-22 TW	494 Typ G2	LLR05N11AC1
Luxtech	COB-WD-10-1512	479 Typ G2	LLR05N11AC1
Luxtech	COB-WD-17-2420	491 Typ G2	LLR05N11AC1
Luxtech	COB-DN-16-2420	442 Typ G2	LLR05N11AC1
Nichia	NV..S007Z / NF..T012B	452 Typ G2	LLR05N11AC1
Nichia	NF..S024B / NT..S024B	452 Typ G2	LLR05N11AC1
Nichia	NJ..S024Z	452 Typ G2	LLR05N11AC1
Nichia	NV..L016Z / NV..L024Z	438 Typ G2	LLR05N11AC1
Nichia	NF..L036B / NF..L048B	438 Typ G2	LLR05N11AC1
Nichia	NF..L060B	438 Typ G2	LLR05N11AC1
Nichia	NV..J048Z / NF..J108B	463 Typ G2	LLR05N11AC1
Nichia	NF..J130B	463 Typ G2	LLR05N11AC1
Nichia	NJNWS012Z Tunable	495 Typ G2 HV	LLR05N11AC1
Nichia	NJCWL024Z Tunable	497 Typ G2 HV	LLR05N11AC1
Nichia	NVCWJ024Z Tunable	498 Typ G2 HV	LLR05N11AC1
Prolight Opto	PASB	434 Typ G2	LLR05N11AC1
Prolight Opto	PASQ/PAPQ DimToWarm	434 Typ G2	LLR05N11AC1
Prolight Opto	PDSQ DimToWarm	490 Typ G2	LLR05N11AC1
Prolight Opto	PDSR DimToWarm	432 Typ G2	LLR05N11AC1
Prolight Opto	PDSJ Tunable	442 Typ G2	LLR05N11AC1

**Mögliche Halter / COB Kombinationen / Holder / COB combinations Gaggione LLR05N**

COB Hersteller COB Supplier	COB Typ COB Type	Halter Holder	Reflektor Reflector
Samsung	LC 010C	434 Typ G2	LLR05N11AC1
Samsung	LC 020C / 030C / 040C	477 Typ G2	LLR05N11AC1
Samsung	LC 003D / 006D	434 Typ G2	LLR05N11AC1
Samsung	LC 009D / 013D	434 Typ G2	LLR05N11AC1
Samsung	LC 016D / 019D	477 Typ G2	LLR05N11AC1
Samsung	LC 026D / 033D	477 Typ G2	LLR05N11AC1
Samsung	LC 040D / 060D / 080D	431 Typ G2	LLR05N11AC1
Samsung	LC010T Tunable	501 Typ G2	LLR05N11AC1
Samsung	LC020T Tunable	501 Typ G2	LLR05N11AC1
Samsung	LC035T Tunable	502 Typ G2	LLR05N11AC1
Seoul	SAW* 0661	434 Typ G2	LLR05N11AC1
Seoul	SAW* 1062 / 1063	434 Typ G2	LLR05N11AC1
Seoul	SAW* 1564 / 1565 / 1566	477 Typ G2	LLR05N11AC1
Seoul	SAW* 22AA / 2296	431 Typ G2	LLR05N11AC1
Seoul	SAW* 2298 / 226A	431 Typ G2	LLR05N11AC1
Signify	Fortimo SLM12xx .. 1215 G7	452 Typ G2	LLR05N11AC1
Signify	Fortimo SLM12xx .. 1619 G7	480 Typ G2	LLR05N11AC1
Signify	Fortimo SLM12xx .. 2024 G7	432 Typ G2	LLR05N11AC1
Signify	Fortimo SLM12xx .. 2828 G7	431 Typ G2	LLR05N11AC1
Signify	Fortimo SLM12xx .. 1313 G7N	434 Typ G2	LLR05N11AC1
Signify	Fortimo SLM12xx .. 1919 G7N	433 Typ G2	LLR05N11AC1
Signify	Fortimo SLM12xx .. 2828 G7N	431 Typ G2	LLR05N11AC1
Signify	Fortimo SLM13xx .. 2024 G8	432 Typ G2	LLR05N11AC1
Signify	Fortimo SLM13xx .. 2828 G8 UHE	431 Typ G2	LLR05N11AC1
Signify	Fortimo L06A 1313 G7N Tunable	509 Typ G2	LLR05N11AC1
Signify	Fortimo L09A 1919 G7N Tunable	501 Typ G2	LLR05N11AC1
Tridonic	SLE ADV8 LES 04 / 06	434 Typ G2	LLR05N11AC1
Tridonic	SLE ADV8 LES 09	434 Typ G2	LLR05N11AC1
Tridonic	SLE ADV8 LES 13	433 Typ G2	LLR05N11AC1
Tridonic	SLE ADV8 LES 15	433 Typ G2	LLR05N11AC1
Tridonic	SLE ADV8 LES 17	431 Typ G2	LLR05N11AC1
Tridonic	SLE ADV8 LES 21	431 Typ G2	LLR05N11AC1
Tridonic	SLE SNC8 LES 06	434 Typ G2	LLR05N11AC1

**Mögliche Halter / COB Kombinationen / Holder / COB combinations Gaggione LLR05N**

COB Hersteller COB Supplier	COB Typ COB Type	Halter Holder	Reflektor Reflector
Tridonic	SLE SNC8 LES 09	434 Typ G2	LLR05N11AC1
Tridonic	SLE SNC8 LES 15	433 Typ G2	LLR05N11AC1
VS Lighting	DMS 102 ***W	434 Typ G2	LLR05N11AC1
VS Lighting	DMS 124 ***W	434 Typ G2	LLR05N11AC1
VS Lighting	DMS 125 / 126 / 128 ***W	433 Typ G2	LLR05N11AC1
VS Lighting	DMS 120 ***W	431 Typ G2	LLR05N11AC1
VS Lighting	DMS 12C / 18B ***W	431 Typ G2	LLR05N11AC1
VS Lighting	DMS 1208J	433 Typ G2	LLR05N11AC1
VS Lighting	DMS 1212J / 1812J	431 Typ G2	LLR05N11AC1
VS Lighting	VCA 042	486 Typ G2	LLR05N11AC1
VS Lighting	VCA2 122 / 123 / 124	486 Typ G2	LLR05N11AC1
VS Lighting	VCA2 126 / 128	477 Typ G2	LLR05N11AC1
VS Lighting	VCA2 1211 / 1213	471 Typ G2	LLR05N11AC1
VS Lighting	TW 1914 Tunable	493 Typ G2	LLR05N11AC1
VS Lighting	TW 2820 Tunable	494 Typ G2	LLR05N11AC1
VS Lighting	WU-M-618 DimToWarm	434 Typ G2	LLR05N11AC1
Xicato	XOB 04	486 Typ G2	LLR05N11AC1
Xicato	XOB 06 (B)	486 Typ G2	LLR05N11AC1
Xicato	XOB 09	434 Typ G2	LLR05N11AC1
Xicato	XOB 14	433 Typ G2	LLR05N11AC1
Xicato	XOB 23	431 Typ G2	LLR05N11AC1



**LLH66B1 System  
Bayonet50G**

**Gaggione Linse / Halter**  
Gaggione lenses / holder

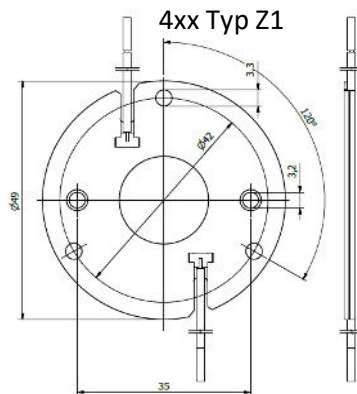
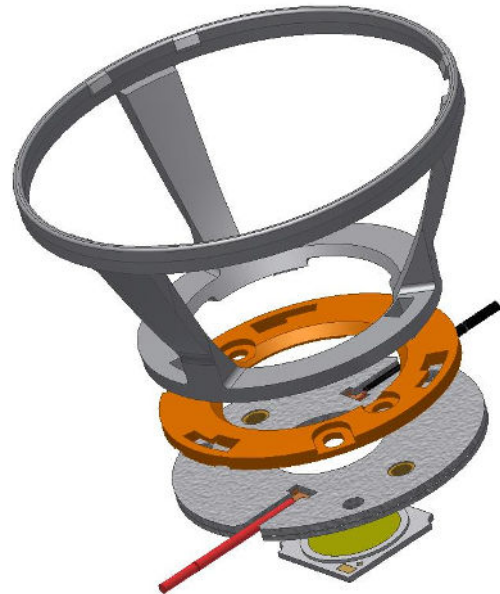
LLH66B1.. Base  
for both versions  
HADAR70 (-ZOOM)  
LLC66  
LLC79  
VEGA45  
SIRIUS50 (-ZOOM)  
UFO45 (-ZOOM)  
UFO67 (-ZOOM)

**Hersteller Webseite**  
Manufacturer website

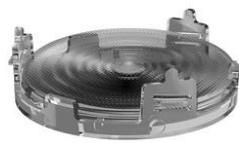
[www.optic-gaggione.com](http://www.optic-gaggione.com)

**LED Halter B+W**  
LED Holder B+W

4xx / Typ Z1



Suitable optics



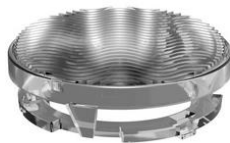
**UFO45Z**  
45mm low-profile  
Zoom collimator



**UFO67Z**  
67mm low-profile  
Zoom collimator



**UFO67**  
67mm low-profile  
Fresnel  
collimator



**UFO45A**  
45mm low-profile  
Wall washer



**LLC79**  
45mm silicone  
collimator



**VEGA45**  
45mm PMMA  
collimator



**SIRIUS50**  
50mm ZOOM  
collimator



**LLC66**  
67mm silicone collimator



**HADAR70**  
70mm PMMA collimator



**HADAR70**  
70mm ZOOM PMMA collimator

**Mögliche Halter / COB Kombinationen / Holder / COB combinations Gaggione LLC66**

COB Hersteller COB Supplier	COB Typ COB Type	Halter Holder	Linse / Halter Lens / Holder
Bridgelux	V3 HD / V4 HD Gen 7,8	460 Typ Z1	LLS66.. / LLH066B1..
Bridgelux	V6 HD Gen 7,8	464 Typ Z1	LLS66.. / LLH066B1..
Bridgelux	V9 HD / V11 HD Gen 7,8	496 Typ Z1	LLS66.. / LLH066B1..
Bridgelux	V6 Gen 8,9 (just 2 pads!)	460 Typ Z1	LLS66.. / LLH066B1..
Bridgelux	V8 Gen 7,8,9 (4 pads)	460 Typ Z1	LLS66.. / LLH066B1..
Bridgelux	V10 Gen 7,8,9	486 Typ Z1	LLS66.. / LLH066B1..
Bridgelux	V13 Gen 7,8,9	477 Typ Z1	LLS66.. / LLH066B1..
Bridgelux	V15 Gen 7,8,9	456 Typ Z1	LLS66.. / LLH066B1..
Bridgelux	V18 Gen 7,8,9	462 Typ Z1	LLS66.. / LLH066B1..
Bridgelux	Vesta DTW 6/9mm Gen 1,2	490 Typ Z1	LLS66.. / LLH066B1..
Bridgelux	Vesta DTW 13/15mm Gen 1,2	491 Typ Z1	LLS66.. / LLH066B1..
Bridgelux	Vesta DTW 18mm Gen 1	505 Typ Z1	LLS66.. / LLH066B1..
Bridgelux	Vesta Tunable 6mm Gen 2	504 Typ Z1	LLS66.. / LLH066B1..
Bridgelux	Vesta Tunable 9mm Gen 2	489 Typ Z1	LLS66.. / LLH066B1..
Bridgelux	Vesta Tunable 13mm Gen 2	492 Typ Z1	LLS66.. / LLH066B1..
Bridgelux	Vesta Tunable 15mm Gen 2	482 Typ Z1	LLS66.. / LLH066B1..
Bridgelux	Vesta Tunable 18mm Gen 2	483 Typ Z1	LLS66.. / LLH066B1..
Citizen	CLU 028 / 02J / 02Q	434 Typ Z1	LLS66.. / LLH066B1..
Citizen	CLU 038 / 03H / 03J / 03Q	433 Typ Z1	LLS66.. / LLH066B1..
Citizen	CLU 7R3	485 Typ Z1	LLS66.. / LLH066B1..
Citizen	CLU 702 / 703 / 7A2 / 7A3 / 7B2	434 Typ Z1	LLS66.. / LLH066B1..
Citizen	CLU 712 / 713	477 Typ Z1	LLS66.. / LLH066B1..
Citizen	CLU 723	477 Typ Z1	LLS66.. / LLH066B1..
Citizen	CLU 733	471 Typ Z1	LLS66.. / LLH066B1..
Citizen	LCN-C01B2 / C02B2 Tunable	481 Typ Z1	LLS66.. / LLH066B1..
Citizen	LCN-C04B2 / C05B2 Tunable	481 Typ Z1	LLS66.. / LLH066B1..
CREE	CHA 0304 / 0410 / 0612	434 Typ Z1	LLS66.. / LLH066B1..
CREE	CHA 0825	433 Typ Z1	LLS66.. / LLH066B1..
CREE	CMA 1303 / 1306	448 Typ Z1	LLS66.. / LLH066B1..
CREE	CMA 1516	441 Typ Z1	LLS66.. / LLH066B1..
CREE	CMA 1825 / 1840	437 Typ Z1	LLS66.. / LLH066B1..
CREE	CMA 2550	439 Typ Z1	LLS66.. / LLH066B1..
CREE	CMB 1304 / 1306	448 Typ Z1	LLS66.. / LLH066B1..
CREE	CMB 1507 / 1510 / 1516	441 Typ Z1	LLS66.. / LLH066B1..
CREE	CMB 1818 / 1825	437 Typ Z1	LLS66.. / LLH066B1..

**Mögliche Halter / COB Kombinationen / Holder / COB combinations Gaggione LLC66**

COB Hersteller COB Supplier	COB Typ COB Type	Halter Holder	Linse / Halter Lense / Holder
CREE	CMB 1840	457 Typ Z1	LLS66.. / LLH066B1..
CREE	CMB 2550	439 Typ Z1	LLS66.. / LLH066B1..
CREE	CMT 1407 / 1412 / 1420	434 Typ Z1	LLS66.. / LLH066B1..
CREE	CMT 1922 / 1925 / 1930 / 1945	477 Typ Z1	LLS66.. / LLH066B1..
CREE	CMU 1003 / 1006 / 1010 / 1013	434 Typ Z1	LLS66.. / LLH066B1..
CREE	CMU 1516 / 1519 / 1526 / 1532	433 Typ Z1	LLS66.. / LLH066B1..
CREE	CXB 1304 / 1310	448 Typ Z1	LLS66.. / LLH066B1..
CREE	CXB 1507 / 1512 / 1520	441 Typ Z1	LLS66.. / LLH066B1..
CREE	CXB 1816 / 1820	437 Typ Z1	LLS66.. / LLH066B1..
CREE	CXB 1830	457 Typ Z1	LLS66.. / LLH066B1..
CREE	CXB 2530 / 2540	439 Typ Z1	LLS66.. / LLH066B1..
Edison	2PHE 03 / 06 / 09 / 13	434 Typ Z1	LLS66.. / LLH066B1..
Edison	2PHE 15 / 18 / 24 / 30	433 Typ Z1	LLS66.. / LLH066B1..
Lextar	PB 06 / 09 / 13	434 Typ Z1	LLS66.. / LLH066B1..
Lextar	PB 16 / 19 / 26	433 Typ Z1	LLS66.. / LLH066B1..
Lumileds	Luxeon 1202s / 1202HD	452 Typ Z1	LLS66.. / LLH066B1..
Lumileds	Luxeon 1202 / 1203 / 1204HD	480 Typ Z1	LLS66.. / LLH066B1..
Lumileds	Luxeon 1205HD	480 Typ Z1	LLS66.. / LLH066B1..
Lumileds	Luxeon 1204 / 1205	432 Typ Z1	LLS66.. / LLH066B1..
Lumileds	Luxeon 1208 / 1210	432 Typ Z1	LLS66.. / LLH066B1..
Lumileds	Luxeon 1211	431 Typ Z1	LLS66.. / LLH066B1..
Lumileds	CS COB L02 / L04	434 Typ Z1	LLS66.. / LLH066B1..
Lumileds	CS COB L06 / L08 / L10	433 Typ Z1	LLS66.. / LLH066B1..
Lumileds	CX Plus HD S01H4, S0xH6	448 Typ Z1	LLS66.. / LLH066B1..
Lumileds	CX Plus HD S04H9	4xx Typ Z1	LLS66.. / LLH066B1..
Lumileds	CX Plus S01Fx / S02Fx	448 Typ Z1	LLS66.. / LLH066B1..
Lumileds	CX Plus M02Fx / M03Fx	441 Typ Z1	LLS66.. / LLH066B1..
Lumileds	CX Plus L04Fx / L05Fx / L08Fx	437 Typ Z1	LLS66.. / LLH066B1..
Luminus	CXM-3-xC	434 Typ Z1	LLS66.. / LLH066B1..
Luminus	CHM-4-BH / CXM-4-xC	434 Typ Z1	LLS66.. / LLH066B1..
Luminus	CHM-6-BH / CXM-6-xC	434 Typ Z1	LLS66.. / LLH066B1..
Luminus	CIM/CLM/CXM-9-xC	434 Typ Z1	LLS66.. / LLH066B1..
Luminus	CLM/CXM-9-xA	461 Typ Z1	LLS66.. / LLH066B1..

**Mögliche Halter / COB Kombinationen / Holder / COB combinations Gaggione LLC66**

COB Hersteller COB Supplier	COB Typ COB Type	Halter Holder	Linse / Halter Lense / Holder
Luminus	CHM-9-BH	433 Typ Z1	LLS66.. / LLH066B1..
Luminus	CXM-11-xC	433 Typ Z1	LLS66.. / LLH066B1..
Luminus	CGM/CIM/CLM/CXM-14-xC	433 Typ Z1	LLS66.. / LLH066B1..
Luminus	CVM/CXM-18	453 Typ Z1	LLS66.. / LLH066B1..
Luminus	CXM-18 Gen6	431 Typ Z1	LLS66.. / LLH066B1..
Luminus	CDM-6 / CDM-9Gen1 DtW	490 Typ Z1	LLS66.. / LLH066B1..
Luminus	CDM-9 Gen2 DtW	491 Typ Z1	LLS66.. / LLH066B1..
Luminus	CDM-14/CDM-18 DtW	491 Typ Z1	LLS66.. / LLH066B1..
Luminus	CTM-6 / CTM-9 TW	495 Typ Z1	LLS66.. / LLH066B1..
Luminus	CTM-14 TW	442 Typ Z1	LLS66.. / LLH066B1..
Luminus	CTM-14 RGBW	500 Typ Z1	LLS66.. / LLH066B1..
Luminus	CTM-18 Gen1 TW	442 Typ Z1	LLS66.. / LLH066B1..
Luminus	CTM-18 Gen2 TW	483 Typ Z1	LLS66.. / LLH066B1..
Luxtech	COB-WD-10-1512	479 Typ Z1	LLS66.. / LLH066B1..
Luxtech	COB-WD-17-2420	491 Typ Z1	LLS66.. / LLH066B1..
Luxtech	COB-DN-16-2420	442 Typ Z1	LLS66.. / LLH066B1..
Nichia	NV..S007Z / NF..T012B	452 Typ Z1	LLS66.. / LLH066B1..
Nichia	NF..S024B / NT..S024B	452 Typ Z1	LLS66.. / LLH066B1..
Nichia	NJ..S024Z	452 Typ Z1	LLS66.. / LLH066B1..
Nichia	NV..L016Z / NV..L024Z	438 Typ Z1	LLS66.. / LLH066B1..
Nichia	NF..L036B / NF..L048B	438 Typ Z1	LLS66.. / LLH066B1..
Nichia	NF..L060B	438 Typ Z1	LLS66.. / LLH066B1..
Nichia	NV..J048Z / NF..J108B	463 Typ Z1	LLS66.. / LLH066B1..
Nichia	NF..J130B	463 Typ Z1	LLS66.. / LLH066B1..
Nichia	NJNWS012Z Tunable	495 Typ Z1 HV	LLS66.. / LLH066B1..
Nichia	NJCWL024Z Tunable	497 Typ Z1 HV	LLS66.. / LLH066B1..
Nichia	NVCWJ024Z Tunable	498 Typ Z1 HV	LLS66.. / LLH066B1..
Prolight Opto	PASB	434 Typ Z1	LLS66.. / LLH066B1..
Prolight Opto	PASQ/PAPQ DimToWarm	434 Typ Z1	LLS66.. / LLH066B1..
Prolight Opto	PDSQ DimToWarm	490 Typ Z1	LLS66.. / LLH066B1..
Prolight Opto	PDSR DimToWarm	432 Typ Z1	LLS66.. / LLH066B1..
Prolight Opto	PDSJ Tunable	442 Typ Z1	LLS66.. / LLH066B1..
Samsung	LC 010C	434 Typ Z1	LLS66.. / LLH066B1..



**Mögliche Halter / COB Kombinationen / Holder / COB combinations Gaggione LLC66**

COB Hersteller COB Supplier	COB Typ COB Type	Halter Holder	Linse / Halter Lense / Holder
Samsung	LC 020C / 030C / 040C	477 Typ Z1	LLS66.. / LLH066B1..
Samsung	LC 003D / 006D	434 Typ Z1	LLS66.. / LLH066B1..
Samsung	LC 009D / 013D	434 Typ Z1	LLS66.. / LLH066B1..
Samsung	LC 016D / 019D	477 Typ Z1	LLS66.. / LLH066B1..
Samsung	LC 026D / 033D	477 Typ Z1	LLS66.. / LLH066B1..
Samsung	LC010T Tunable	501 Typ Z1	LLS66.. / LLH066B1..
Samsung	LC020T Tunable	501 Typ Z1	LLS66.. / LLH066B1..
Seoul	SAW* 0661	434 Typ Z1	LLS66.. / LLH066B1..
Seoul	SAW* 1062 / 1063	434 Typ Z1	LLS66.. / LLH066B1..
Seoul	SAW* 1564 / 1565 / 1566	477 Typ Z1	LLS66.. / LLH066B1..
Signify	Fortimo SLM12xx .. 1215 G7	452 Typ Z1	LLS66.. / LLH066B1..
Signify	Fortimo SLM12xx .. 1619 G7	480 Typ Z1	LLS66.. / LLH066B1..
Signify	Fortimo SLM12xx .. 2024 G7	432 Typ Z1	LLS66.. / LLH066B1..
Signify	Fortimo SLM12xx .. 1313 G7N	434 Typ Z1	LLS66.. / LLH066B1..
Signify	Fortimo SLM12xx .. 1919 G7N	433 Typ Z1	LLS66.. / LLH066B1..
Signify	Fortimo SLM13xx .. 2024 G8 UHE	432 Typ Z1	LLS66.. / LLH066B1..
Signify	Fortimo L06A 1313 G7N Tunable	509 Typ Z1	LLS66.. / LLH066B1..
Signify	Fortimo L09A 1919 G7N Tunable	501 Typ Z1	LLS66.. / LLH066B1..
Tridonic	SLE ADV8 LES 04 / 06	434 Typ Z1	LLS66.. / LLH066B1..
Tridonic	SLE ADV8 LES 09	434 Typ Z1	LLS66.. / LLH066B1..
Tridonic	SLE ADV8 LES 13	433 Typ Z1	LLS66.. / LLH066B1..
Tridonic	SLE ADV8 LES 15	433 Typ Z1	LLS66.. / LLH066B1..
Tridonic	SLE SNC8 LES 06	434 Typ Z1	LLS66.. / LLH066B1..
Tridonic	SLE SNC8 LES 09	434 Typ Z1	LLS66.. / LLH066B1..
Tridonic	SLE SNC8 LES 15	433 Typ Z1	LLS66.. / LLH066B1..
VS Lighting	DMS 102 ***W	434 Typ Z1	LLS66.. / LLH066B1..
VS Lighting	DMS 124 ***W	434 Typ Z1	LLS66.. / LLH066B1..
VS Lighting	DMS 125 / 126 / 128 ***W	433 Typ Z1	LLS66.. / LLH066B1..
VS Lighting	DMS 120 ***W	431 Typ Z1	LLS66.. / LLH066B1..
VS Lighting	DMS 1208J	433 Typ Z1	LLS66.. / LLH066B1..
VS Lighting	VCA 042	486 Typ Z1	LLS66.. / LLH066B1..
VS Lighting	VCA2 122 / 123 / 124	486 Typ Z1	LLS66.. / LLH066B1..
VS Lighting	VCA2 126 / 128	477 Typ Z1	LLS66.. / LLH066B1..

**Mögliche Halter / COB Kombinationen / Holder / COB combinations** **Gaggione LLC66**

<b>COB Hersteller COB Supplier</b>	<b>COB Typ COB Type</b>	<b>Halter Holder</b>	<b>Linse / Halter Lense / Holder</b>
VS Lighting	TW 1914 Tunable	493 Typ Z1	LLS66.. / LLH066B1..
VS Lighting	WU-M-618 DimToWarm	434 Typ Z1	LLS66.. / LLH066B1..
Xicato	XOB 04	486 Typ Z1	LLS66.. / LLH066B1..
Xicato	XOB 06 (B)	486 Typ Z1	LLS66.. / LLH066B1..
Xicato	XOB 09	434 Typ Z1	LLS66.. / LLH066B1..
Xicato	XOB 14	433 Typ Z1	LLS66.. / LLH066B1..



**Buch 3 kompatibler Halter**  
Book 3 compatible holder

**Zhaga Webseite**  
Zhaga website

[www.zhagastandard.org](http://www.zhagastandard.org)

Zertifikate / certificates

**LED Halter B+W**  
LED Holder B+W

4xx / Typ Z1

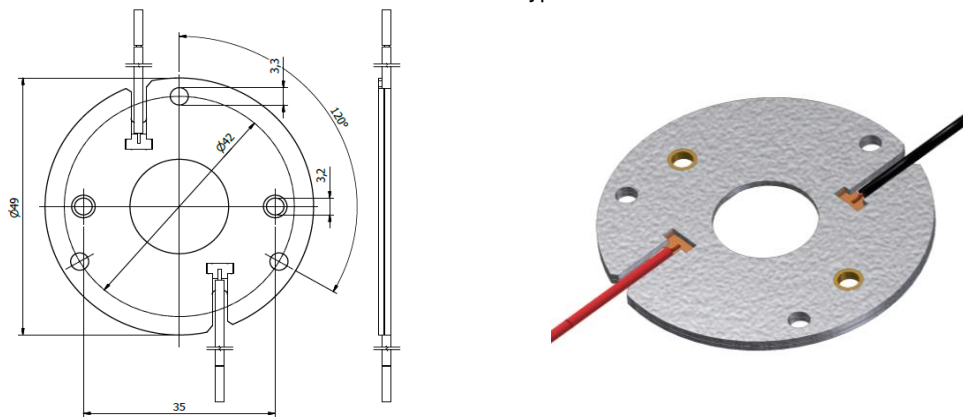
Ausweis-Nr.  
40041342 File  
E47294




**Unsere Halter 4xx Typ Z1 entsprechen mit dem Aussendurchmesser und den Befestigungspunkten den Vorgaben von Zhaga Buch 3, aber durch die extrem flache Bauweise können sie nicht zertifiziert werden.**

The shape and fixing points holders of our holders 4xx Type Z1 are compatible to Zhaga Book 3, but due to the thin design they cannot be certified.

4xx / Typ Z1



**verfügbare Halter / available Holder**

COB Hersteller COB Supplier	COB Typ COB Type	Halter Holder
Bridgelux	V3 HD / V4 HD Gen 7,8	460 Typ Z1
Bridgelux	V6 HD Gen 7,8	464 Typ Z1
Bridgelux	V9 HD / V11 HD Gen 7,8	496 Typ Z1
Bridgelux	V6 Gen 8,9 (just 2 pads!)	460 Typ Z1
Bridgelux	V8 Gen 7,8,9 (4 pads)	460 Typ Z1
Bridgelux	V10 Gen 7,8,9	486 Typ Z1
Bridgelux	V13 Gen 7,8,9	477 Typ Z1
Bridgelux	V15 Gen 7,8,9	456 Typ Z1
Bridgelux	V18 Gen 7,8,9	462 Typ Z1
Bridgelux	V22 Gen 7,8,9	431 Typ Z1
Bridgelux	Vesta DTW 6/9mm Gen 1,2	490 Typ Z1

**verfügbare Halter / available Holder**

<b>COB Hersteller COB Supplier</b>	<b>COB Typ COB Type</b>	<b>Halter Holder</b>
Bridgelux	Vesta DTW 13/15mm Gen 1,2	491 Typ Z1
Bridgelux	Vesta DTW 18mm Gen 1	505 Typ Z1
Bridgelux	Vesta Tunable 6mm Gen 2	504 Typ Z1
Bridgelux	Vesta Tunable 9mm Gen 2	489 Typ Z1
Bridgelux	Vesta Tunable 13mm Gen 2	492 Typ Z1
Bridgelux	Vesta Tunable 15mm Gen 2	482 Typ Z1
Bridgelux	Vesta Tunable 18mm Gen 2	483 Typ Z1
Bridgelux	Vesta Tunable 22mm Gen 2	494 Typ Z1
Citizen	CLU 028 / 02J / 02Q	434 Typ Z1
Citizen	CLU 038 / 03H / 03J / 03Q	433 Typ Z1
Citizen	CLU 048 / 04H / 04J / 04Q	431 Typ Z1
Citizen	CLU 702 / 703 / 7A2 / 7A3 / 7B2	434 Typ Z1
Citizen	CLU 712 / 713	477 Typ Z1
Citizen	CLU 723	477 Typ Z1
Citizen	CLU 733	471 Typ Z1
Citizen	LCN-C01B2 / C02B2 Tunable	481 Typ Z1
Citizen	LCN-C04B2 / C05B2 Tunable	481 Typ Z1
CREE	CHA 0825	433 Typ Z1
CREE	CMA 1303 / 1306	448 Typ Z1
CREE	CMA 1516	441 Typ Z1
CREE	CMA 1825 / 1840	437 Typ Z1
CREE	CMA 2550	439 Typ Z1
CREE	CMA 3090	447 Typ Z1
CREE	CMB 1304 / 1306	448 Typ Z1
CREE	CMB 1507 / 1510 / 1516	441 Typ Z1
CREE	CMB 1818 / 1825	437 Typ Z1
CREE	CMB 1840	457 Typ Z1
CREE	CMB 2550	439 Typ Z1
CREE	CMB 3090	447 Typ Z1
CREE	CMT 1407 / 1412 / 1420	434 Typ Z1
CREE	CMT 1922 / 1925 / 1930 / 1945	477 Typ Z1
CREE	CMT 2850 / 2870 / 2890	471 Typ Z1
CREE	CMU 1003 / 1006 / 1010 / 1013	434 Typ Z1
CREE	CMU 1516 / 1519 / 1526 / 1532	433 Typ Z1
CREE	CMU 2236 / 2239 / 2258 / 2287	471 Typ Z1

verfügbare Halter / available Holder

COB Hersteller COB Supplier	COB Typ COB Type	Halter Holder
CREE	CXB 1304 / 1310	448 Typ Z1
CREE	CXB 1507 / 1512 / 1520	441 Typ Z1
CREE	CXB 1816 / 1820	437 Typ Z1
CREE	CXB 1830	457 Typ Z1
CREE	CXB 2530 / 2540	439 Typ Z1
CREE	CXB 3050 / 3070	447 Typ Z1
Edison	2PHE 03 / 06 / 09 / 13	434 Typ Z1
Edison	2PHE 15 / 18 / 24 / 30	433 Typ Z1
Edison	2PHE 55 / 60 / 83	431 Typ Z1
Lextar	PB 06 / 09 / 13	434 Typ Z1
Lextar	PB 16 / 19 / 26	433 Typ Z1
Lextar	PB 38 / 54	431 Typ Z1
Lumileds	Luxeon 1202s / 1202HD	452 Typ Z1
Lumileds	Luxeon 1202 / 1203 / 1204HD	480 Typ Z1
Lumileds	Luxeon 1205HD	480 Typ Z1
Lumileds	Luxeon 1204 / 1205	432 Typ Z1
Lumileds	Luxeon 1208 / 1210	432 Typ Z1
Lumileds	Luxeon 1211	431 Typ Z1
Lumileds	Luxeon 1213 / 1216 / 1812 / 1816	431 Typ Z1
Lumileds	CS COB L02 / L04	434 Typ Z1
Lumileds	CS COB L06 / L08 / L10	433 Typ Z1
Lumileds	CS COB L11 / L13 / L16	431 Typ Z1
Lumileds	CS COB R12 / R18	431 Typ Z1
Lumileds	CX Plus HD S01H4, S0xH6	448 Typ Z1
Lumileds	CX Plus HD S04H9	4xx Typ Z1
Lumileds	CX Plus S01Fx / S02Fx	448 Typ Z1
Lumileds	CX Plus M02Fx / M03Fx	441 Typ Z1
Lumileds	CX Plus L04Fx / L05Fx / L08Fx	437 Typ Z1
Luminus	CHM-4-BH / CXM-4-xC	434 Typ Z1
Luminus	CHM-6-BH / CXM-6-xC	434 Typ Z1
Luminus	CIM/CLM/CXM-9-xC	434 Typ Z1
Luminus	CLM/CXM-9-xA	461 Typ Z1
Luminus	CHM-9-BH	433 Typ Z1

verfügbare Halter / available Holder

COB Hersteller COB Supplier	COB Typ COB Type	Halter Holder
Luminus	CXM-11-xC	433 Typ Z1
Luminus	CGM/CIM/CLM/CXM-14-xC	433 Typ Z1
Luminus	CVM/CXM-18	453 Typ Z1
Luminus	CXM-18 Gen6	431 Typ Z1
Luminus	CGM/CIM/CLM/CXM-22-xC	431 Typ Z1
Luminus	CDM-6 / CDM-9Gen1 DtW	490 Typ Z1
Luminus	CDM-9 Gen2 DtW	491 Typ Z1
Luminus	CDM-14/CDM-18 DtW	491 Typ Z1
Luminus	CTM-6 / CTM-9 TW	495 Typ Z1
Luminus	CTM-14 TW	442 Typ Z1
Luminus	CTM-14 RGBW	500 Typ Z1
Luminus	CTM-18 Gen1 TW	442 Typ Z1
Luminus	CTM-18 Gen2 TW	483 Typ Z1
Luminus	CTM-22 TW	494 Typ Z1
Luxtech	COB-WD-10-1512	479 Typ Z1
Luxtech	COB-WD-17-2420	491 Typ Z1
Luxtech	COB-DN-16-2420	442 Typ Z1
Nichia	NV..S007Z / NF..T012B	452 Typ Z1
Nichia	NF..S024B / NT..S024B	452 Typ Z1
Nichia	NJ..S024Z	452 Typ Z1
Nichia	NV..L016Z / NV..L024Z	438 Typ Z1
Nichia	NF..L036B / NF..L048B	438 Typ Z1
Nichia	NF..L060B	438 Typ Z1
Nichia	NV..J048Z / NF..J108B	463 Typ Z1
Nichia	NF..J130B	463 Typ Z1
Nichia	NJNWS012Z Tunable	495 Typ Z1 HV
Nichia	NJCWL024Z Tunable	497 Typ Z1 HV
Nichia	NVCWJ024Z Tunable	498 Typ Z1 HV
Prolight Opto	PASB	434 Typ Z1
Prolight Opto	PASQ/PAPQ DimToWarm	434 Typ Z1
Prolight Opto	PDSQ DimToWarm	490 Typ Z1
Prolight Opto	PDSR DimToWarm	432 Typ Z1
Prolight Opto	PDSJ Tunable	442 Typ Z1

verfügbare Halter / available Holder

COB Hersteller COB Supplier	COB Typ COB Type	Halter Holder
Samsung	LC 010C	434 Typ Z1
Samsung	LC 020C / 030C / 040C	477 Typ Z1
Samsung	LC 003D / 006D	434 Typ Z1
Samsung	LC 009D / 013D	434 Typ Z1
Samsung	LC 016D / 019D	477 Typ Z1
Samsung	LC 026D / 033D	477 Typ Z1
Samsung	LC 040D / 060D / 080D	431 Typ Z1
Samsung	LC010T Tunable	501 Typ Z1
Samsung	LC020T Tunable	501 Typ Z1
Samsung	LC035T Tunable	502 Typ Z1
Seoul	SAW* 0661	434 Typ Z1
Seoul	SAW* 1062 / 1063	434 Typ Z1
Seoul	SAW* 1564 / 1565 / 1566	477 Typ Z1
Seoul	SAW* 22AA / 2296	431 Typ Z1
Seoul	SAW* 2298 / 226A	431 Typ Z1
Signify	Fortimo SLM12xx .. 1215 G7	452 Typ Z1
Signify	Fortimo SLM12xx .. 1619 G7	480 Typ Z1
Signify	Fortimo SLM12xx .. 2024 G7	432 Typ Z1
Signify	Fortimo SLM12xx .. 2828 G7	431 Typ Z1
Signify	Fortimo SLM12xx .. 1313 G7N	434 Typ Z1
Signify	Fortimo SLM12xx .. 1919 G7N	433 Typ Z1
Signify	Fortimo SLM12xx .. 2828 G7N	431 Typ Z1
Signify	Fortimo SLM13xx .. 2024 G8 UHE	432 Typ Z1
Signify	Fortimo SLM13xx .. 2828 G8 UHE	431 Typ Z1
Signify	Fortimo L06A 1313 G7N Tunable	509 Typ Z1
Signify	Fortimo L09A 1919 G7N Tunable	501 Typ Z1
Tridonic	SLE ADV8 LES 04 / 06	434 Typ Z1
Tridonic	SLE ADV8 LES 09	434 Typ Z1
Tridonic	SLE ADV8 LES 13	433 Typ Z1
Tridonic	SLE ADV8 LES 15	433 Typ Z1
Tridonic	SLE SNC8 LES 06	434 Typ Z1
Tridonic	SLE SNC8 LES 09	434 Typ Z1
Tridonic	SLE SNC8 LES 15	433 Typ Z1

verfügbare Halter / available Holder

COB Hersteller COB Supplier	COB Typ COB Type	Halter Holder
VS Lighting	DMS 102 ***W	434 Typ Z1
VS Lighting	DMS 124 ***W	434 Typ Z1
VS Lighting	DMS 125 / 126 / 128 ***W	433 Typ Z1
VS Lighting	DMS 120 ***W	431 Typ Z1
VS Lighting	DMS 12C / 18B ***W	431 Typ Z1
VS Lighting	DMS 1208J	433 Typ Z1
VS Lighting	DMS 1212J / 1812J	431 Typ Z1
VS Lighting	VCA 042	486 Typ Z1
VS Lighting	VCA2 122 / 123 / 124	486 Typ Z1
VS Lighting	VCA2 126 / 128	477 Typ Z1
VS Lighting	VCA2 1211 / 1213	471 Typ Z1
VS Lighting	TW 1914 Tunable	493 Typ Z1
VS Lighting	TW 2820 Tunable	494 Typ Z1
VS Lighting	WU-M-618 DimToWarm	434 Typ Z1
Xicato	XOB 04	486 Typ Z1
Xicato	XOB 06 (B)	486 Typ Z1
Xicato	XOB 09	434 Typ Z1
Xicato	XOB 14	433 Typ Z1
Xicato	XOB 23	431 Typ Z1



**Wir helfen Ihnen gerne weiter.  
Sprechen Sie uns einfach an!**

Please don't hesitate to contact us  
for any further questions.

**BENDER  
+ WIRTH**



**Ihr Kontakt:**  
Your contact:

**Michael Kritzler**  
Head of Engineering  
+49 (0) 2359 / 669 - 184  
kritzler@bender-wirth.de

**Bender + Wirth GmbH & Co.**  
D-58566 Kierspe, Germany  
+49 (2359) / 669 - 0  
sales@bender-wirth.de  
www.bender-wirth.de